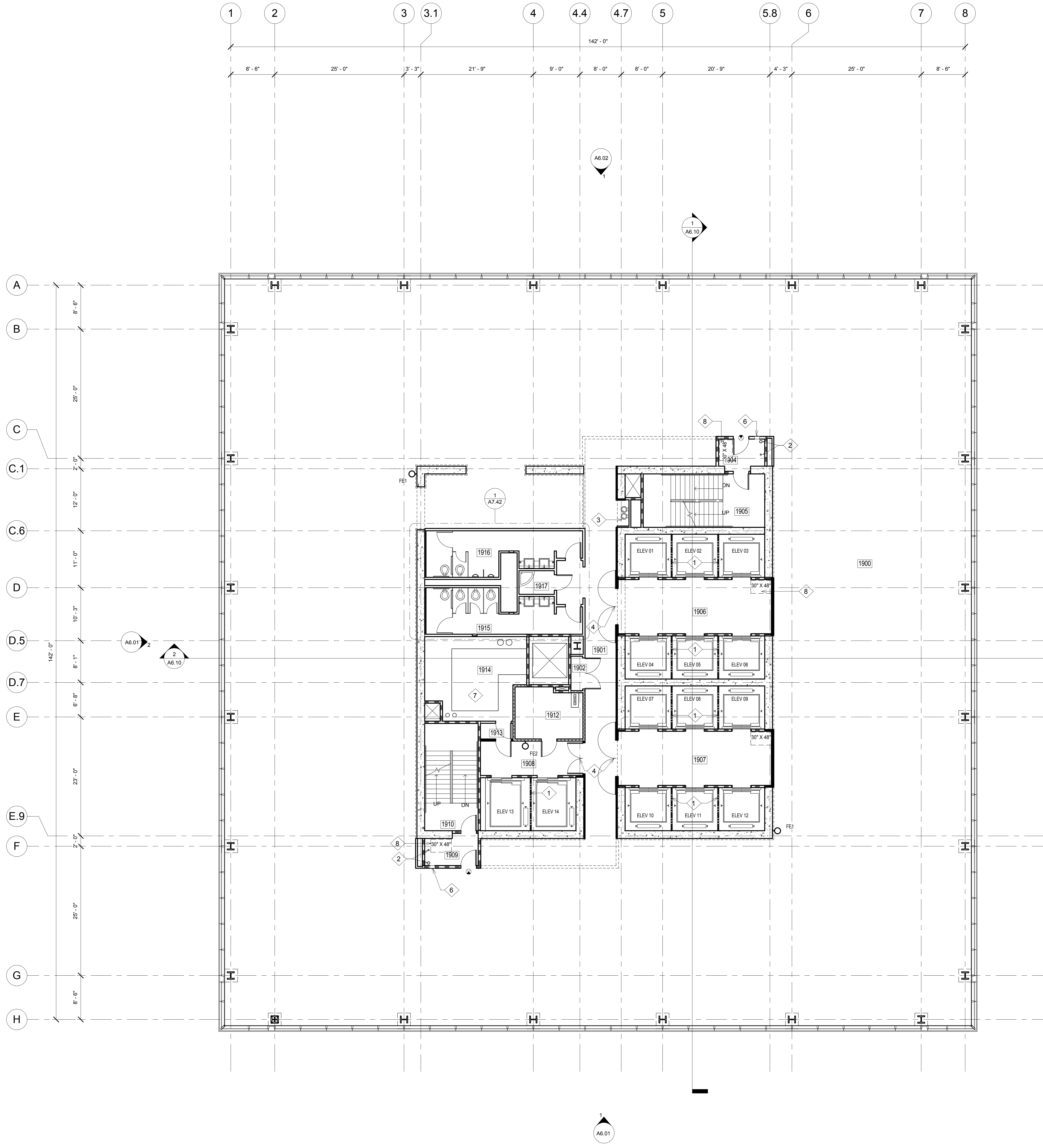


ALL IDEAS, DESIGN ARRANGEMENTS AND PLANS INDICATED OR REPRESENTED BY THIS DRAWING ARE OWNED BY, AND THE PROPERTY OF, CARRIER JOHNSON AND WERE CREATED, EVOLVED AND DEVELOPED FOR USE ON, AND IN CONNECTION WITH THIS PROJECT. NONE OF SUCH IDEAS, DESIGN ARRANGEMENTS, OR PLANS SHALL BE USED BY, OR DISCLOSED TO ANY PERSON, FIRM, OR CORPORATION FOR ANY PURPOSE WHATSOEVER WITHOUT THE WRITTEN PERMISSION OF CARRIER JOHNSON. FILING THESE DRAWINGS OR SPECIFICATIONS WITH ANY PUBLIC AGENCY IS NOT A PUBLICATION OF SAME. NO COPYING, REPRODUCTION OR USE THEREOF IS PERMISSIBLE WITHOUT THE CONSENT OF CARRIER JOHNSON.



KEY NOTES

- 1 BEAM DIVIDER
- 2 COMBINED FIRE RISER STANDPIPE CLASS I AND 4" DRAIN PIPE
- 3 DUAL HEIGHT DRINKING FOUNTAIN
- 4 POCKET DOORS WITH MAGNETIC HOLD-OPEN
- 5 NOT USED
- 6 FIRE EXTINGUISHER CABINET (FEC)
- 7 4" CONCRETE MECHANICAL PAD. REFER TO MECHANICAL
- 8 AREA OF REFUGE

WALL LEGEND

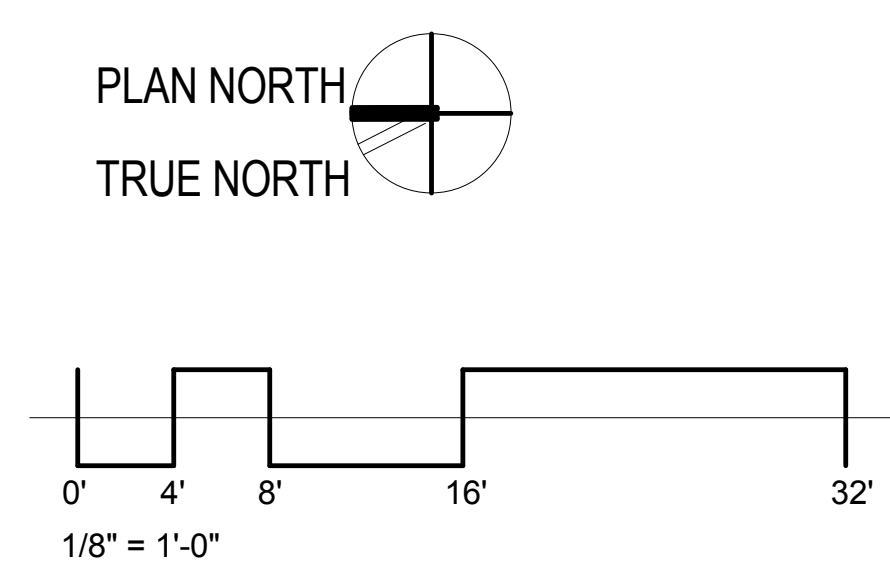
- 1-HOUR FIRE-RESISTIVE FIRE PARTITION
- 1-HOUR FIRE-RESISTIVE FIRE BARRIER
- 2-HOUR FIRE-RESISTIVE FIRE BARRIER

LEGEND

- EXIT SIGN

19TH FLOOR ROOM SCHEDULE

Number	Name
1900	UNOCCUPIED TENANT
1901	HALLWAY
1902	TELECOM
1904	VEST
1905	STAIR 1
1906	ELEV LOBBY
1907	ELEV LOBBY
1908	ELEV LOBBY
1909	VEST
1910	STAIR 2
1912	ELECTRICAL ROOM
1913	VEST.
1914	MECHANICAL
1915	WOMEN
1916	MEN
1917	JAN



ONE BROADWAY PLAZA
 1001 NORTH BROADWAY PLAZA, SANTA ANA, CALIFORNIA

Caribou Industries
 OWNER / DEVELOPER

PERMIT SET 08/19/11
 CITY SUBMITTAL 12/23/10
 PROJECT STATUS
 ISSUES:



PROJECT NO.: 4788.00
 SCALE: AS NOTED
 DRAWN BY: CHECKED BY:

PLOT DATE: 12-22-10
 TITLE: 19TH FLOOR PLAN

DRAWING NO.:

A2.5

carrierjohnson
 architecture for urban environments
 275b mccormick ave. costa mesa ca 92626
 phone 714.432.8756 | fax 714.432.8956