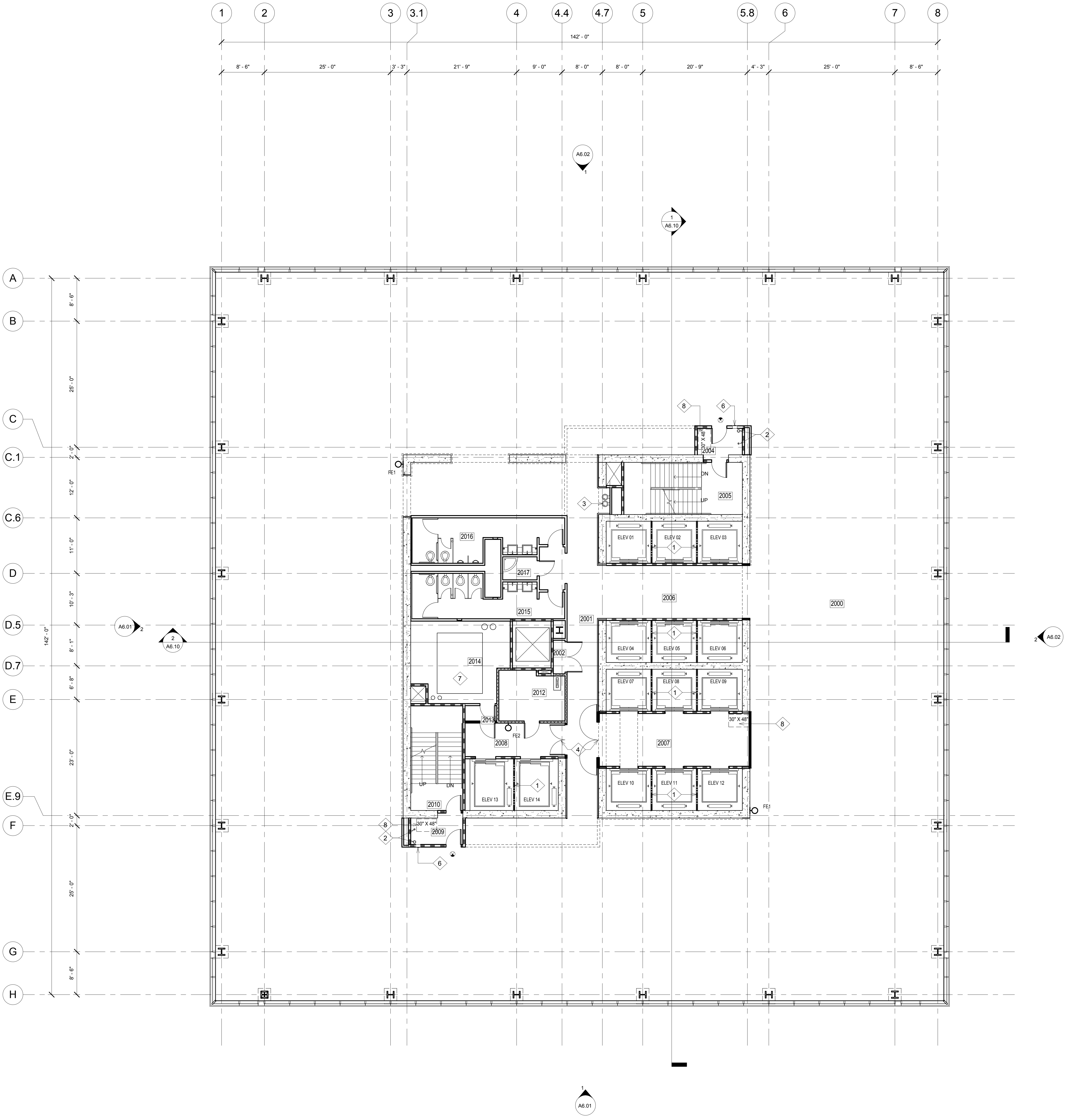


ALL IDEAS, DESIGN ARRANGEMENTS AND PLANS INDICATED OR REPRESENTED BY THIS DRAWING ARE OWNED BY, AND THE PROPERTY OF, CARRIER JOHNSON AND WERE CREATED, EVOLVED AND DEVELOPED FOR USE ON, AND IN CONNECTION WITH THIS PROJECT. NONE OF SUCH IDEAS, DESIGN ARRANGEMENTS, OR PLANS SHALL BE USED BY, OR DISCLOSED TO ANY PERSON, FIRM, OR CORPORATION FOR ANY PURPOSE WHATSOEVER WITHOUT THE WRITTEN PERMISSION OF CARRIER JOHNSON. FILING THESE DRAWINGS OR SPECIFICATIONS WITH ANY PUBLIC AGENCY IS NOT A PUBLICATION OF SAME. NO COPYING, REPRODUCTION OR USE THEREOF IS PERMISSIBLE WITHOUT THE CONSENT OF CARRIER JOHNSON.



KEY NOTES

- 1 BEAM DIVIDER
- 2 COMBINED FIRE RISER STANDPIPE CLASS 1 AND 4" DRAIN PIPE
- 3 DUAL HEIGHT DRINKING FOUNTAIN
- 4 POCKET DOORS WITH MAGNETIC HOLD-OPEN
- 5 NOT USED
- 6 FIRE EXTINGUISHER CABINET (FEC)
- 7 4" CONCRETE MECHANICAL PAD. REFER TO MECHANICAL
- 8 AREA OF REFUGE

WALL LEGEND

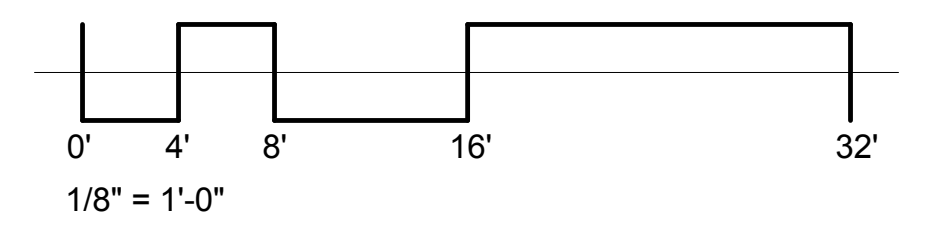
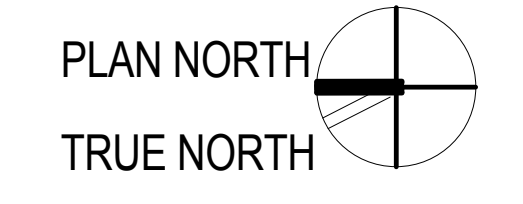
- 1-HOUR FIRE-RESISTIVE FIRE PARTITION
- 1-HOUR FIRE-RESISTIVE FIRE BARRIER
- 2-HOUR FIRE-RESISTIVE FIRE BARRIER

LEGEND

- EXIT SIGN

20TH FLOOR ROOM SCHEDULE

Number	Name
2000	UNOCCUPIED TENANT
2001	HALLWAY
2002	TELECOM
2004	VEST
2005	STAIR 1
2006	UNOCCUPIED TENANT
2007	ELEVATOR LOBBY
2008	ELEV. LOBBY
2009	VEST
2010	STAIR 2
2012	ELECT. ROOM
2013	VEST
2014	MECHANICAL
2015	WOMEN
2016	MEN
2017	JAN.



ONE BROADWAY PLAZA
 1001 NORTH BROADWAY PLAZA, SANTA ANA, CALIFORNIA

Caribou Industries
 OWNER / DEVELOPER

carrierjohnson
 architecture for urban environments

275b mccormick ave. costa mesa ca 92626
 phone 714.432.8756 | fax 714.432.8956

PERMIT SET 08/19/11
 CITY SUBMITTAL 12/23/10
 PROJECT STATUS
 ISSUES:

PROJECT NO.: 4788.00
 SCALE: AS NOTED
 DRAWN BY: CHECKED BY:
 PLOT DATE: 12-22-10
 TITLE: 20TH FLOOR PLAN

DRAWING NO.: **A2.6**

