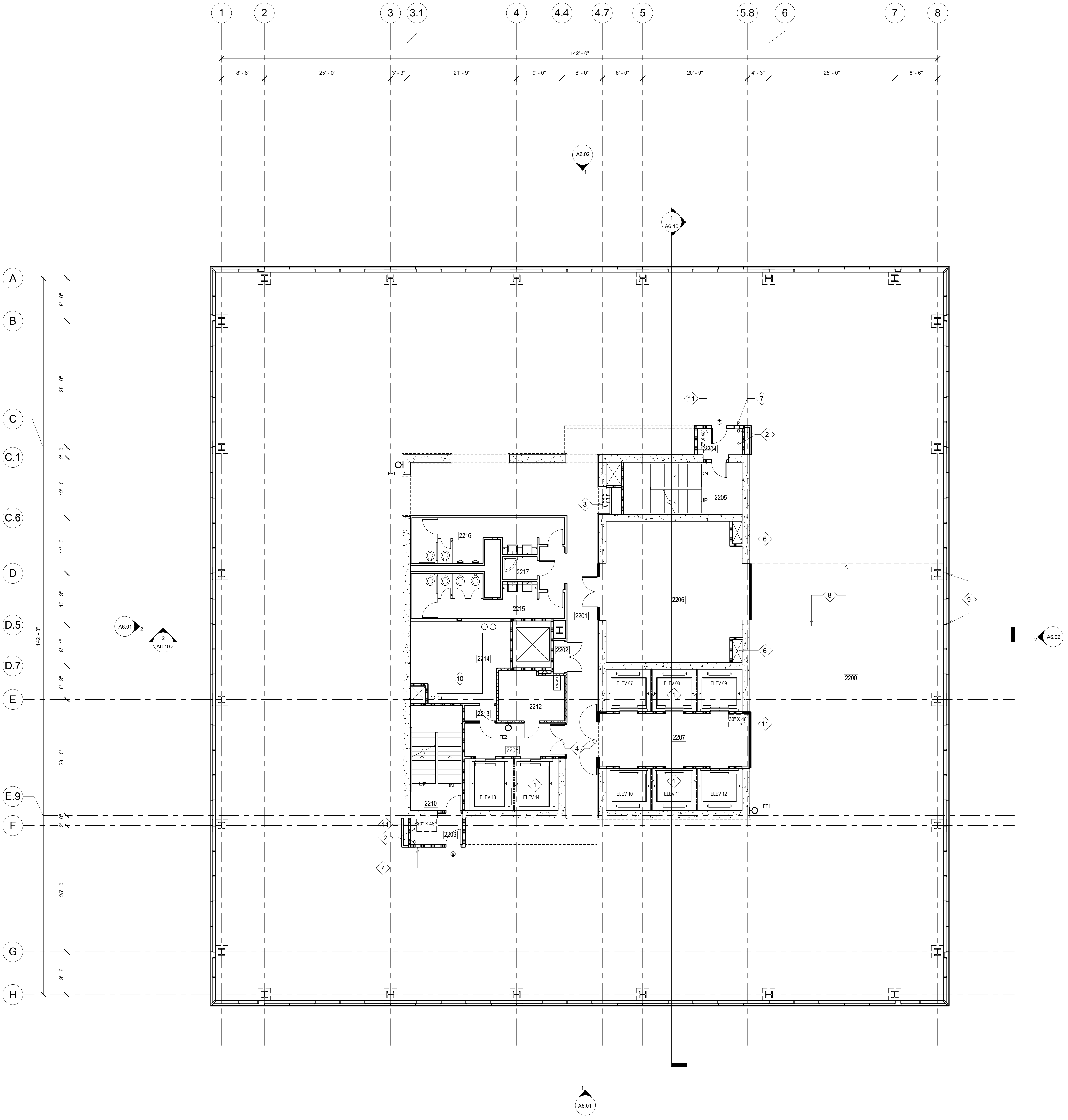


ALL IDEAS, DESIGN ARRANGEMENTS AND PLANS INDICATED OR REPRESENTED BY THIS DRAWING ARE OWNED BY, AND THE PROPERTY OF, CARRIER JOHNSON AND WERE CREATED, EVOLVED AND DEVELOPED FOR USE ON, AND IN CONNECTION WITH THIS PROJECT. NONE OF SUCH IDEAS, DESIGN ARRANGEMENTS, OR PLANS SHALL BE USED BY, OR DISCLOSED TO ANY PERSON, FIRM, OR CORPORATION FOR ANY PURPOSE WHATSOEVER WITHOUT THE WRITTEN PERMISSION OF CARRIER JOHNSON. FILING THESE DRAWINGS OR SPECIFICATIONS WITH ANY PUBLIC AGENCY IS NOT A PUBLICATION OF SAME. NO COPYING, REPRODUCTION OR USE THEREOF IS PERMISSIBLE WITHOUT THE CONSENT OF CARRIER JOHNSON.



- KEY NOTES**
- 1 BEAM DIVIDER
 - 2 COMBINED FIRE RISER STANDPIPE CLASS I AND 4" DRAIN PIPE
 - 3 DUAL HEIGHT DRINKING FOUNTAIN
 - 4 POCKET DOORS WITH MAGNETIC HOLD-OPEN
 - 5 NOT USED
 - 6 RECESSED EXTINGUISHER CABINET
 - 7 3/4" FIRE RETARDANT TREATED PLYWOOD BACKER BOARD
 - 8 EQUIPMENT REPLACEMENT PATH. COORDINATE WITH T.I.
 - 9 REMOVABLE CURTAIN WALL PANELS, 10' X 10' MINIMUM
 - 10 4" CONCRETE MECHANICAL PAD. REFER TO MECHANICAL
 - 11 AREA OF REFUGE

- WALL LEGEND**
- 1-HOUR FIRE-RESISTIVE FIRE PARTITION
 - 1-HOUR FIRE-RESISTIVE FIRE BARRIER
 - 2-HOUR FIRE-RESISTIVE FIRE BARRIER

- LEGEND**
- EXIT SIGN

22ND FLOOR ROOM SCHEDULE

Number	Name
2200	UNOCCUPIED TENANT
2201	HALLWAY
2202	TELECOM
2204	VEST.
2205	STAIR 1
2206	ELECTRICAL ROOM
2207	ELEV. LOBBY
2208	ELEV. LOBBY
2209	VEST.
2210	STAIR 2
2212	ELECT. RM.
2213	VEST.
2214	MECHANICAL
2215	WOMEN
2216	MEN
2217	JAN.

ONE BROADWAY PLAZA
 1001 NORTH BROADWAY PLAZA, SANTA ANA, CALIFORNIA

Caribou Industries
 OWNER / DEVELOPER

PERMIT SET 08/19/11
 CITY SUBMITTAL 12/23/10
 PROJECT STATUS
 ISSUES:



PROJECT NO: 4788.00
 SCALE: AS NOTED
 DRAWN BY: CHECKED BY:
 PLOT DATE: 12-22-10
 TITLE:

22ND FLOOR PLAN

DRAWING NO:

A2.8