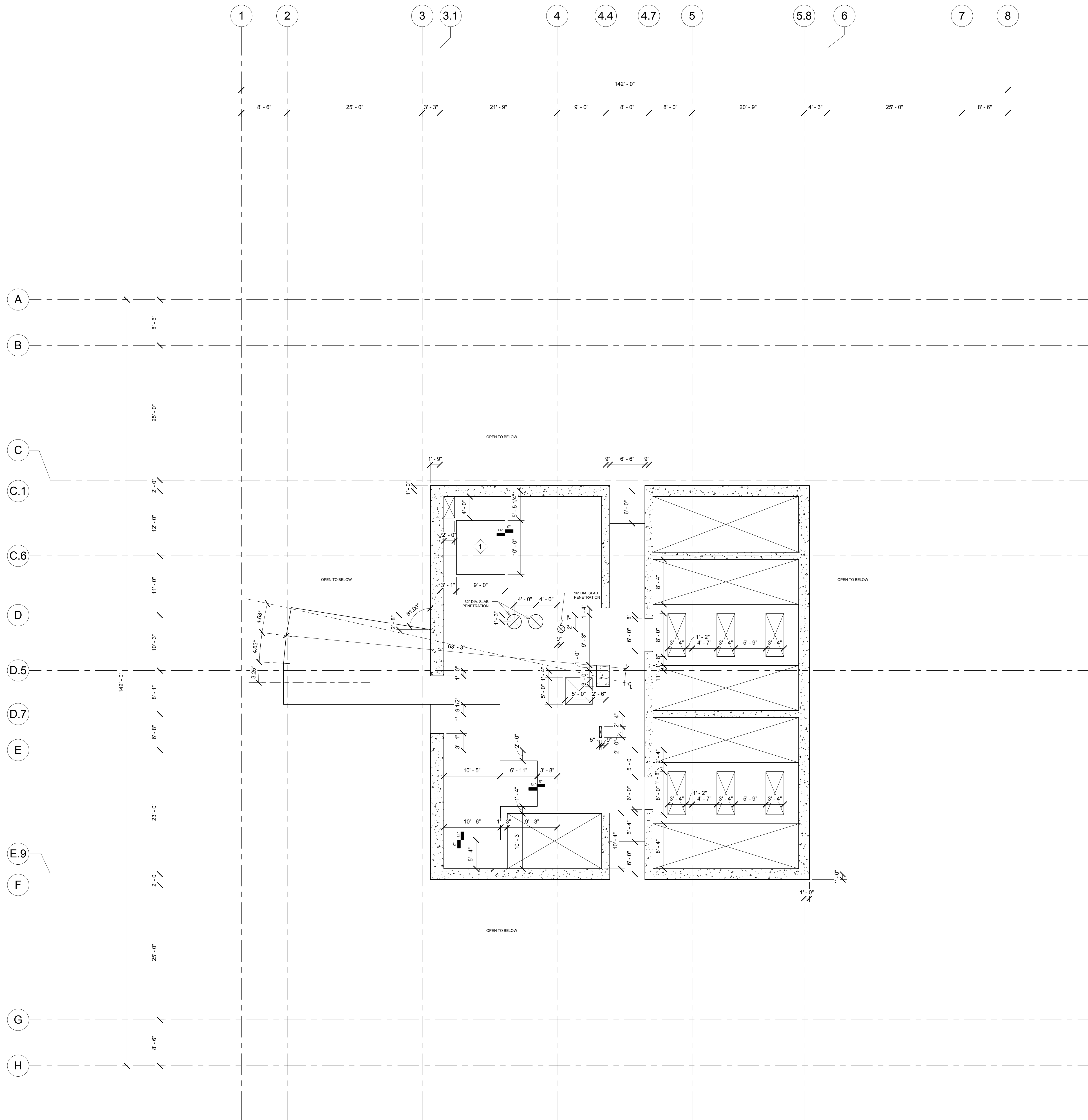


ALL IDEAS, DESIGN ARRANGEMENTS AND PLANS INDICATED OR REPRESENTED BY THIS DRAWING ARE OWNED BY, AND THE PROPERTY OF CARRIER JOHNSON AND WERE CREATED, EVOLVED AND DEVELOPED FOR USE ON, AND IN CONNECTION WITH THIS PROJECT. NONE OF SUCH IDEAS, DESIGN ARRANGEMENTS, OR PLANS SHALL BE USED BY, OR DISCLOSED TO ANY PERSON, FIRM, OR CORPORATION FOR ANY PURPOSE WHATSOEVER WITHOUT THE WRITTEN PERMISSION OF CARRIER JOHNSON. FILING THESE DRAWINGS OR SPECIFICATIONS WITH ANY PUBLIC AGENCY IS NOT A PUBLICATION OF SAME. NO COPYING, REPRODUCTION OR USE THEREOF IS PERMISSIBLE WITHOUT THE CONSENT OF CARRIER JOHNSON.



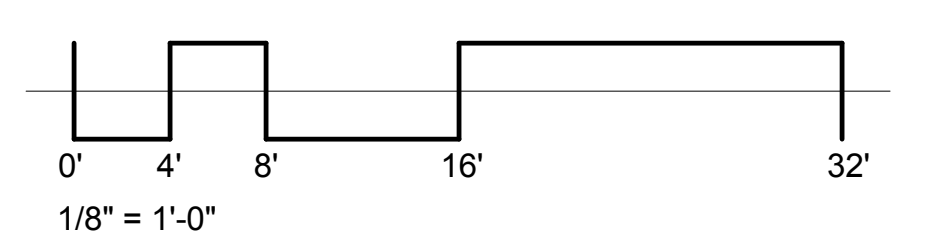
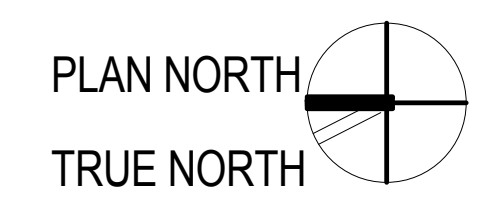
KEY NOTES

- 1 4" CONCRETE MECHANICAL PAD

GENERAL NOTES:

LEGEND

SYMBOL	DESCRIPTION
	SLAB DEPRESSION
	SLAB PENETRATION
	CAST-IN-PLACE CONCRETE WALL



ONE BROADWAY PLAZA
 1001 NORTH BROADWAY PLAZA, SANTA ANA, CALIFORNIA
 Caribou Industries
 OWNER / DEVELOPER

PERMIT SET 08/19/11
 CITY SUBMITTAL 12/23/10
 PROJECT STATUS
 ISSUES:



PROJECT NO: 4788.00
 SCALE: AS NOTED
 DRAWN BY: CHECKED BY:
 PLOT DATE: 12-22-10
 TITLE:

2ND FLOOR EDGE OF DECK PLAN

DRAWING NO:

A2.2.1

carrierjohnson
 architecture for urban environments
 275b mcoomick ave. costa mesa ca 92626
 phone 714.432.8756 | fax 714.432.8956