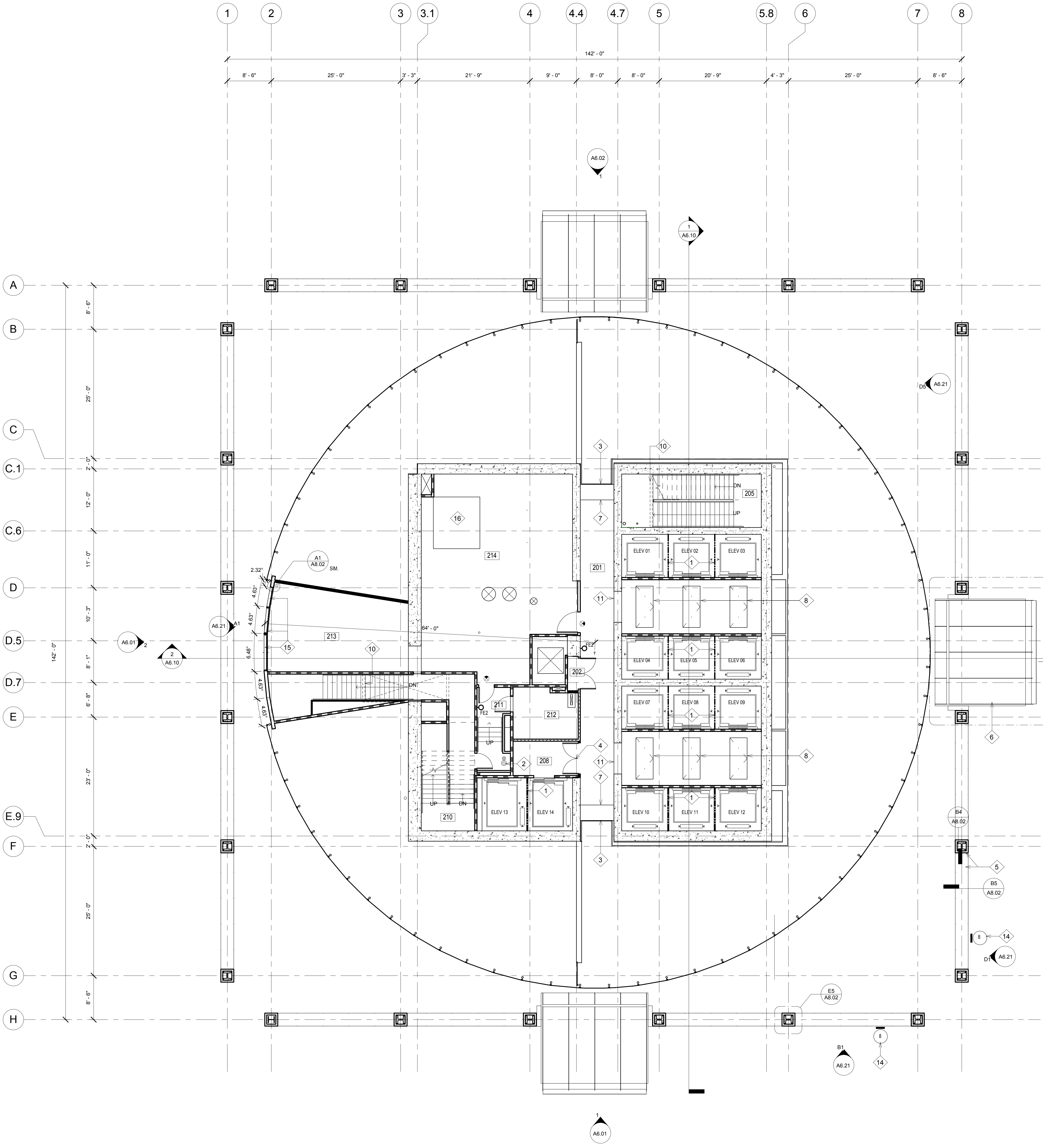


ALL IDEAS, DESIGN ARRANGEMENTS AND PLANS INDICATED OR REPRESENTED BY THIS DRAWING ARE OWNED BY, AND THE PROPERTY OF, CARRIER JOHNSON AND WERE CREATED, EVOLVED AND DEVELOPED FOR USE ON, AND IN CONNECTION WITH THIS PROJECT. NONE OF SUCH IDEAS, DESIGN ARRANGEMENTS, OR PLANS SHALL BE USED BY, OR DISCLOSED TO ANY PERSON, FIRM, OR CORPORATION FOR ANY PURPOSE WITHOUT THE WRITTEN PERMISSION OF CARRIER JOHNSON. FILING THESE DRAWINGS OR SPECIFICATIONS WITH ANY PUBLIC AGENCY IS NOT A PUBLICATION OF SAME. NO COPYING, REPRODUCTION OR USE THEREOF IS PERMISSIBLE WITHOUT THE CONSENT OF CARRIER JOHNSON.



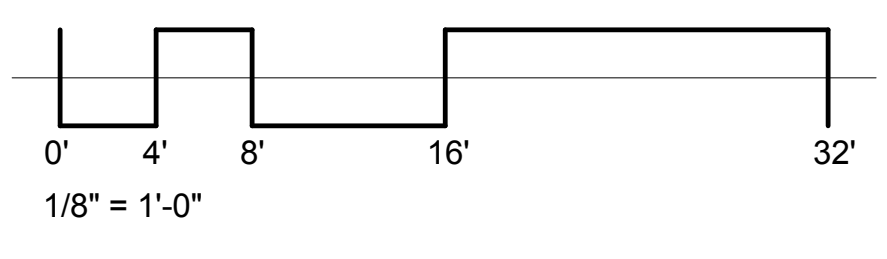
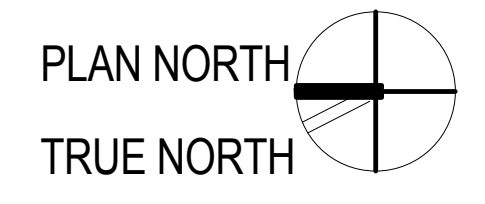
- KEY NOTES**
- 1 BEAM DIVIDER
 - 2 COMBINED FIRE RISER STANDPIPE CLASS I AND 4" DRAIN PIPE
 - 3 TRANSLUCENT LAMINATED GLASS TYPE G6
 - 4 POCKET DOORS WITH MAGNETIC HOLD - OPEN
 - 5 PREFINISHED PREFABRICATED ALUMINUM PANEL BEAM AND COLUMN COVERS
 - 6 PREFINISHED PREFABRICATED ALUMINUM PANEL CANOPY
 - 7 EDGE OF CONCRETE SLAB
 - 8 STEEL HINGED COVER
 - 9 30" X 30" FLOOR ACCESS HATCH
 - 10 2 HOUR HORIZONTAL DUCT SHAFT
 - 11 OPENING (6' X 7') IN CONCRETE WALL, 2 - 4" A.F.F.
 - 12 NOT USED
 - 13 LOUVER, REFER TO MECHANICAL DRAWINGS
 - 14 SIGNS, REFER TO SHEET A8.03 FOR SCHEDULE
 - 15 SEGMENTED MECHANICAL LOUVERS FINISH TO MATCH METAL WALL PANELS
 - 16 4" CONCRETE MECHANICAL PAD, REFER TO MECHANICAL

- WALL LEGEND**
- 1-HOUR FIRE-RESISTIVE FIRE PARTITION
 - 1-HOUR FIRE-RESISTIVE FIRE BARRIER
 - 2-HOUR FIRE-RESISTIVE FIRE BARRIER

- LEGEND**
- EXIT SIGN

2ND LEVEL ROOM SCHEDULE

Number	Name
201	HALLWAY
202	TELECOM RM.
205	STAIR 1
208	ELEV LOBBY
210	STAIR 2
211	VEST
212	ELECTRICAL
213	MECHANICAL RM.
214	MECHANICAL



ONE BROADWAY PLAZA
 1001 NORTH BROADWAY PLAZA, SANTA ANA, CALIFORNIA

Caribou Industries
 OWNER / DEVELOPER

PERMIT SET 08/19/11
 CITY SUBMITTAL 12/23/10
 PROJECT STATUS
 ISSUES:



PROJECT NO: 4788.00
 SCALE: AS NOTED
 DRAWN BY: CHECKED BY:
 PLOT DATE: 12-22-10
 TITLE:

2ND FLOOR PLAN

DRAWING NO:

A2.2

carrierjohnson
 architecture for urban environments
 275b mocomick ave. costa mesa ca 92626
 phone 714.432.8756 | fax 714.432.8956