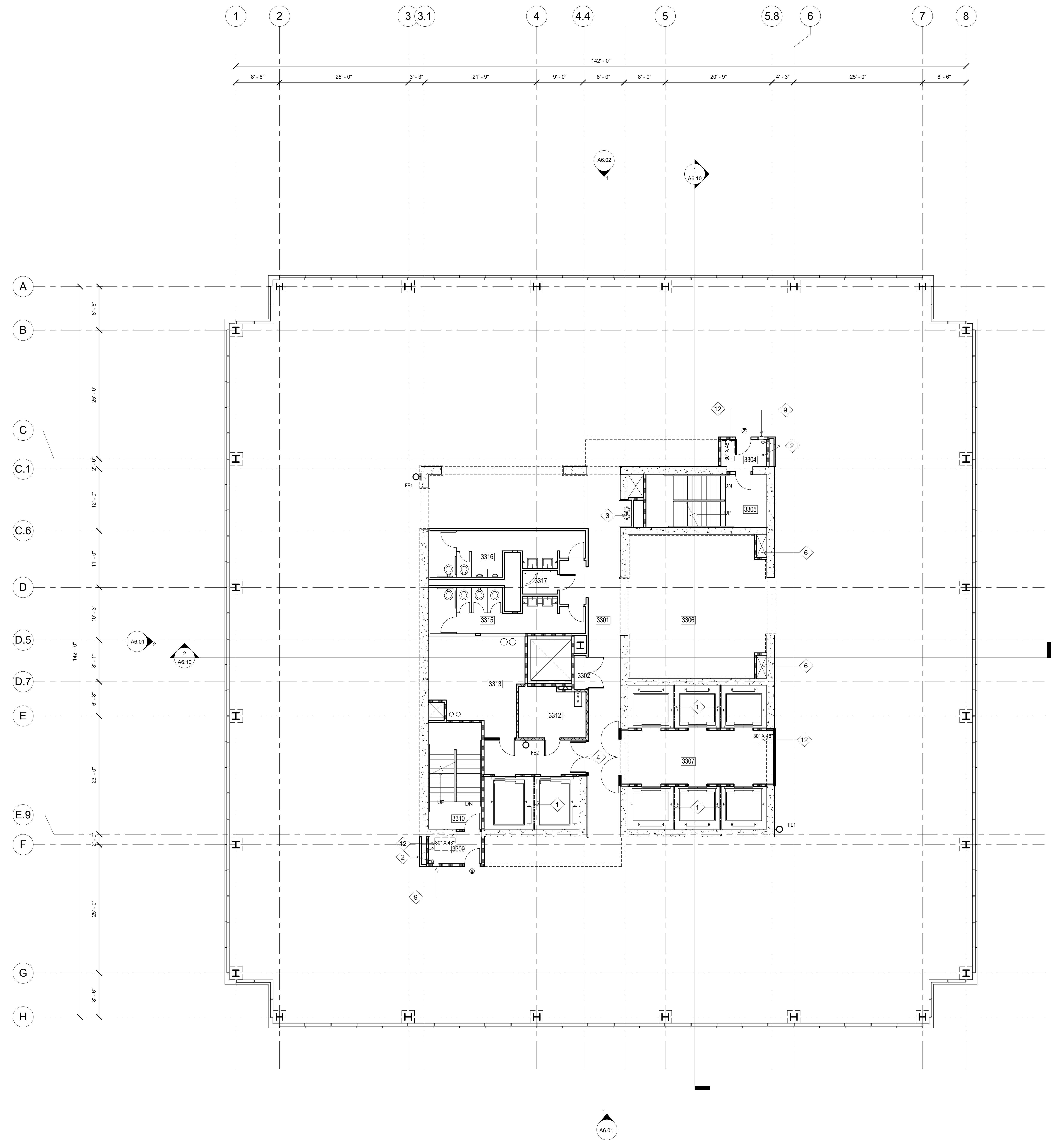


ALL IDEAS, DESIGN ARRANGEMENTS AND PLANS INDICATED OR REPRESENTED BY THIS DRAWING ARE OWNED BY, AND THE PROPERTY OF, CARRIER JOHNSON AND WERE CREATED, EVOLVED AND DEVELOPED FOR USE ON, AND IN CONNECTION WITH THIS PROJECT. NONE OF SUCH IDEAS, DESIGN ARRANGEMENTS, OR PLANS SHALL BE USED BY, OR DISCLOSED TO ANY PERSON, FIRM, OR CORPORATION FOR ANY PURPOSE WHATSOEVER WITHOUT THE WRITTEN PERMISSION OF CARRIER JOHNSON. FILING THESE DRAWINGS OR SPECIFICATIONS WITH ANY PUBLIC AGENCY IS NOT A PUBLICATION OF SAME. NO COPYING, REPRODUCTION OR USE THEREOF IS PERMISSIBLE WITHOUT THE CONSENT OF CARRIER JOHNSON.



KEY NOTES

- 1 BEAM DIVIDER
- 2 COMBINED FIRE RISER STANDPIPE CLASS I AND 4" DRAIN PIPE
- 3 DUAL HEIGHT DRINKING FOUNTAIN
- 4 POCKET DOORS WITH MAGNETIC HOLD-OPEN
- 5 NOT USED
- 6 ELEVATOR VENT SHAFT
- 7 PREFINISHED PREFABRICATED ALUMINUM COPING
- 8 BUILDING UPLIGHT
- 9 FIRE EXTINGUISHER CABINET (FEC)
- 10 2 HOUR HORIZONTAL SHAFT TRANSITION OVERHEAD
- 11 4" CONCRETE MECHANICAL PAD. REFER TO MECHANICAL
- 12 AREA OF REFUGE

WALL LEGEND

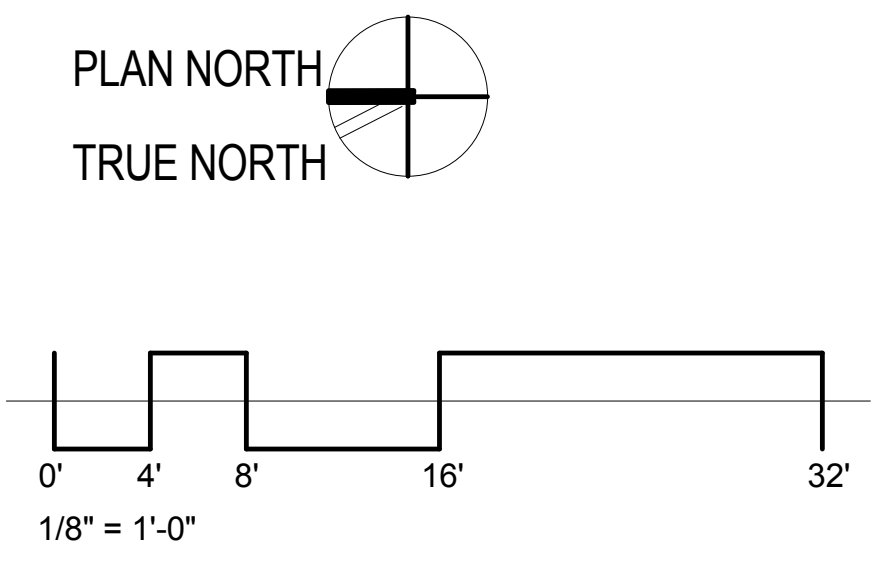
- 1-HOUR FIRE-RESISTIVE FIRE PARTITION
- 1-HOUR FIRE-RESISTIVE FIRE BARRIER
- 2-HOUR FIRE-RESISTIVE FIRE BARRIER

LEGEND

- EXT SIGN

33RD FLOOR ROOM SCHEDULE

Number	Name
3301	HALLWAY
3302	TELECOM
3304	VESTIBULE
3305	STAIR 1
3306	UNOCCUPIED TENANT
3307	ELEV. LOBBY
3308	Room
3309	VESTIBULE
3310	STAIR 2
3312	ELECTRICAL RM.
3313	STORAGE
3315	WOMEN
3316	MEN
3317	JAN.



ONE BROADWAY PLAZA
 1001 NORTH BROADWAY PLAZA, SANTA ANA, CALIFORNIA

Caribou Industries
 OWNER / DEVELOPER

PERMIT SET 08/19/11
 CITY SUBMITTAL 12/23/10
 PROJECT STATUS
 ISSUES:



PROJECT NO: 4788.00
 SCALE: AS NOTED
 DRAWN BY: CHECKED BY:
 PLOT DATE: 12-22-10
 TITLE:

33RD FLOOR PLAN

DRAWING NO:

A2.11

carrierjohnson
 architecture for urban environments
 275b mcoomick ave. costa mesa ca 92626
 phone 714.432.8756 | fax 714.432.8956