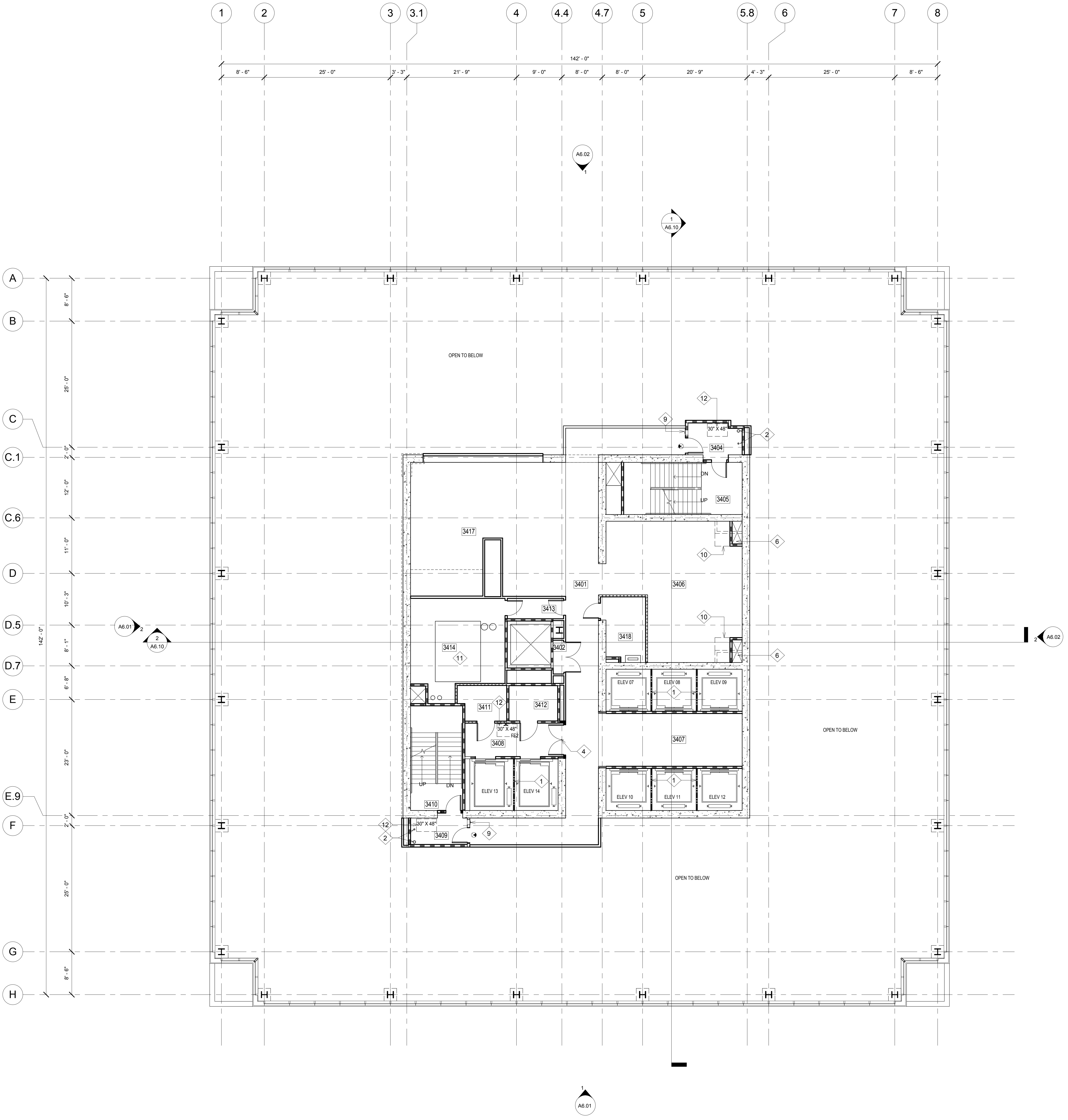


ALL IDEAS, DESIGN ARRANGEMENTS AND PLANS INDICATED OR REPRESENTED BY THIS DRAWING ARE OWNED BY, AND THE PROPERTY OF, CARRIER JOHNSON AND WERE CREATED, EVOLVED AND DEVELOPED FOR USE ON, AND IN CONNECTION WITH THIS PROJECT. NONE OF SUCH IDEAS, DESIGN ARRANGEMENTS, OR PLANS SHALL BE USED BY, OR DISCLOSED TO ANY PERSON, FIRM, OR CORPORATION FOR ANY PURPOSE WHATSOEVER WITHOUT THE WRITTEN PERMISSION OF CARRIER JOHNSON. FILING THESE DRAWINGS OR SPECIFICATIONS WITH ANY PUBLIC AGENCY IS NOT A PUBLICATION OF SAME. NO COPYING, REPRODUCTION OR USE THEREOF IS PERMISSIBLE WITHOUT THE CONSENT OF CARRIER JOHNSON.



- KEY NOTES**
- 1 BEAM DIVIDER
 - 2 COMBINED FIRE RISER STANDPIPE CLASS I AND 4" DRAIN PIPE
 - 3 DUAL HEIGHT DRINKING FOUNTAIN
 - 4 POCKET DOORS WITH MAGNETIC HOLD-OPEN
 - 5 NOT USED
 - 6 ELEVATOR VENT SHAFT
 - 7 PREFINISHED PREFABRICATED ALUMINUM COPING
 - 8 BUILDING UPLIGHT
 - 9 FIRE EXTINGUISHER CABINET (FEC)
 - 10 2 HOUR HORIZONTAL SHAFT TRANSITION OVERHEAD
 - 11 4" CONCRETE MECHANICAL PAD. REFER TO MECHANICAL
 - 12 AREA OF REFUGE

- WALL LEGEND**
- 1-HOUR FIRE-RESISTIVE FIRE PARTITION
 - 1-HOUR FIRE-RESISTIVE FIRE BARRIER
 - 2-HOUR FIRE-RESISTIVE FIRE BARRIER

- LEGEND**
- EXIT SIGN

34TH FLOOR ROOM SCHEDULE

Number	Name
3401	HALLWAY
3402	TELECOM
3404	VEST
3405	STAIR 1
3406	STORAGE
3407	STORAGE
3408	ELEV LOBBY
3409	VEST
3410	STAIR 2
3411	ELEV MACH RM
3412	ELEV PIT
3413	VEST
3414	MECHANICAL
3417	STORAGE
3418	ELECTRICAL

carrierjohnson
 architecture for urban environments
 275b mccormick ave. costa mesa ca 92626
 phone 714.432.8756 | fax 714.432.8956

ONE BROADWAY PLAZA
 1001 NORTH BROADWAY PLAZA, SANTA ANA, CALIFORNIA
 Caribou Industries
 OWNER / DEVELOPER

PERMIT SET 08/19/11
 CITY SUBMITTAL 12/23/10
 PROJECT STATUS
 ISSUES:



PROJECT NO: 4788.00
 SCALE: AS NOTED
 DRAWN BY: CHECKED BY:
 PLOT DATE: 12-22-10
 TITLE:

34TH FLOOR PLAN

DRAWING NO:

A2.12

