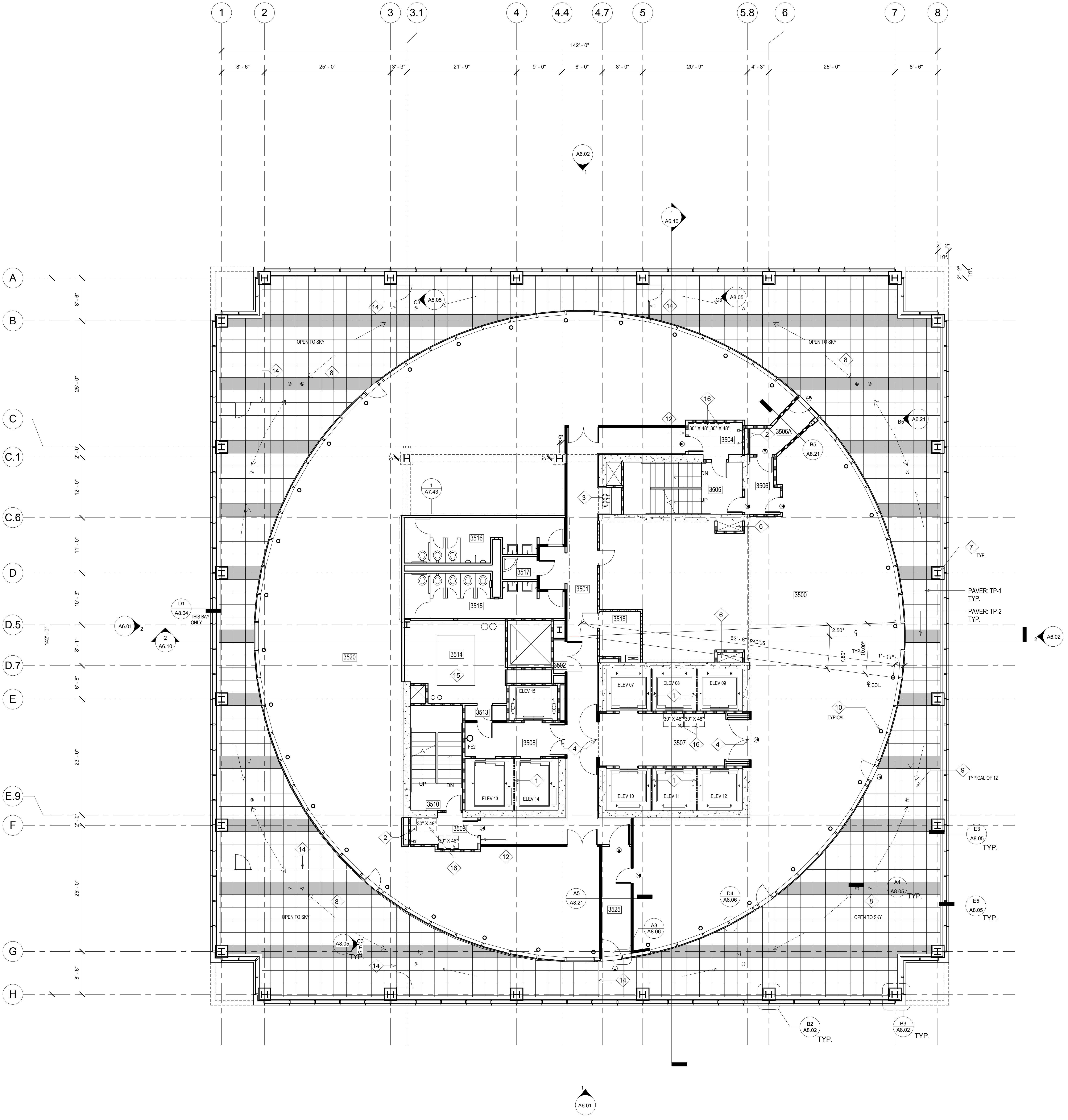


ALL IDEAS, DESIGN ARRANGEMENTS AND PLANS INDICATED OR REPRESENTED BY THIS DRAWING ARE OWNED BY, AND THE PROPERTY OF, CARRIER JOHNSON. AND WERE CREATED, EVOLVED AND DEVELOPED FOR USE ON, AND IN CONNECTION WITH THIS PROJECT. NONE OF SUCH IDEAS, DESIGN ARRANGEMENTS, OR PLANS SHALL BE USED BY, OR DISCLOSED TO ANY PERSON, FIRM, OR CORPORATION FOR ANY PURPOSE WHATSOEVER WITHOUT THE WRITTEN PERMISSION OF CARRIER JOHNSON. FILING THESE DRAWINGS OR SPECIFICATIONS WITH ANY PUBLIC AGENCY IS NOT A PUBLICATION OF SAME. NO COPYING, REPRODUCTION OR USE THEREOF IS PERMISSIBLE WITHOUT THE CONSENT OF CARRIER JOHNSON.



**KEY NOTES**

- 1 BEAM DIVIDER
- 2 COMBINED FIRE RISER STANDPIPE CLASS I AND 4" DRAIN PIPE
- 3 DUAL HEIGHT DRINKING FOUNTAIN
- 4 POCKET DOORS WITH MAGNETIC HOLD-OPEN
- 5 NOT USED
- 6 ELEVATOR VENT SHAFT
- 7 PREFINISHED PREFABRICATED ALUMINUM PANEL COLUMN COVERS
- 8 30" X 30" PRECAST CONCRETE PAVER SYSTEM OVER RIGID INSULATION AND WATERPROOFING MEMBRANE PROVIDE 2 HRS FIRE PROOFING ON UNDERSIDE OF STEEL DECK. REFER TO FINISH LEGEND SHT. A8.04 FOR PAVER COLORS
- 9 ROOF DRAIN AND OVERFLOW BELOW PAVERS. CENTER ON PAVERS SLOPE CONCRETE SLAB TO DRAINS 1% MINIMUM.
- 10 INTUMESCENT FIREPROOFING AT COLUMN WITH COLOR TOP COAT
- 11 NOT USED
- 12 FIRE EXTINGUISHER CABINET (FEC)
- 13 NOT USED
- 14 1 1/2" O.D. STAINLESS STEEL PIPE GUARD RAIL X 3'-6" HIGH WITH VERTICAL POSTS AT 5'-0" O.C. HORIZONTAL PIPES @ 5'-14" O.C. AND 4'-0" WIDE GATE
- 15 4" CONCRETE MECHANICAL PAD. REFER TO MECHANICAL
- 16 AREA OF REFUGE

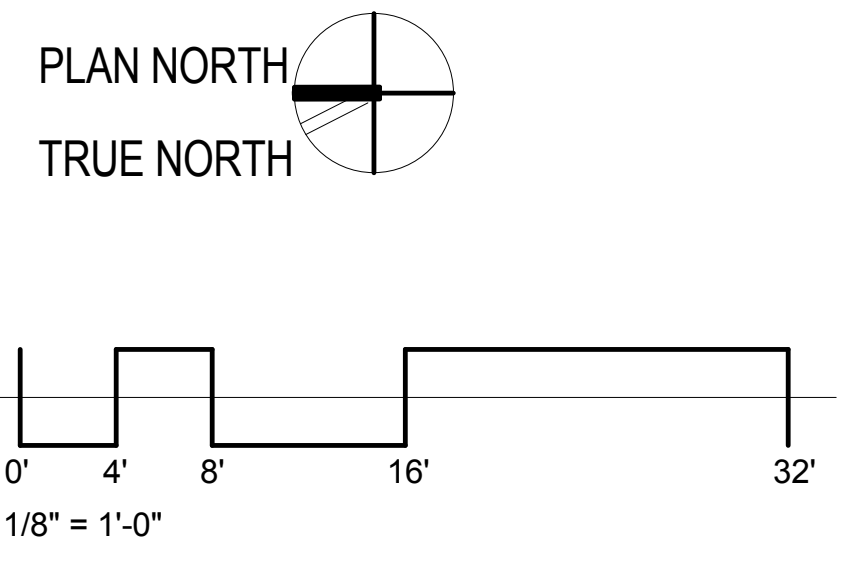
**WALL LEGEND**

- 1-HOUR FIRE-RESISTIVE FIRE PARTITION
- 1-HOUR FIRE-RESISTIVE FIRE BARRIER
- 2-HOUR FIRE-RESISTIVE FIRE BARRIER

**LEGEND**

- EXIT SIGN

35TH FLOOR ROOM SCHEDULE	
Number	Name
3500	UNOCCUPIED TENANT
3501	CORRIDOR
3502	TELECOM
3504	VEST
3505	STAIR 1
3506	VESTIBULE
3506A	VESTIBULE
3507	ELEV LOBBY
3508	ELEV LOBBY
3509	VEST
3510	STAIR 2
3513	VESTIBULE
3514	MECHANICAL
3515	WOMEN
3516	MEN
3517	JAN.
3518	ELECTRICAL
3520	UNOCCUPIED TENANT
3525	CORRIDOR



**ONE BROADWAY PLAZA**  
 1001 NORTH BROADWAY PLAZA, SANTA ANA, CALIFORNIA

**Caribou Industries**  
 OWNER / DEVELOPER

**carrierjohnson**  
 architecture for urban environments

275b mcomick ave. costa mesa ca 92626  
 phone 714.432.8756 | fax 714.432.8956

PERMIT SET 08/19/11  
 CITY SUBMITTAL 12/23/10  
 PROJECT STATUS  
 ISSUES:

PROJECT NO: 4788.00  
 SCALE: AS NOTED  
 DRAWN BY: CHECKED BY:  
 PLOT DATE: 12-22-10  
 TITLE: 35TH FLOOR PLAN MEZZANINE

DRAWING NO: **A2.13**