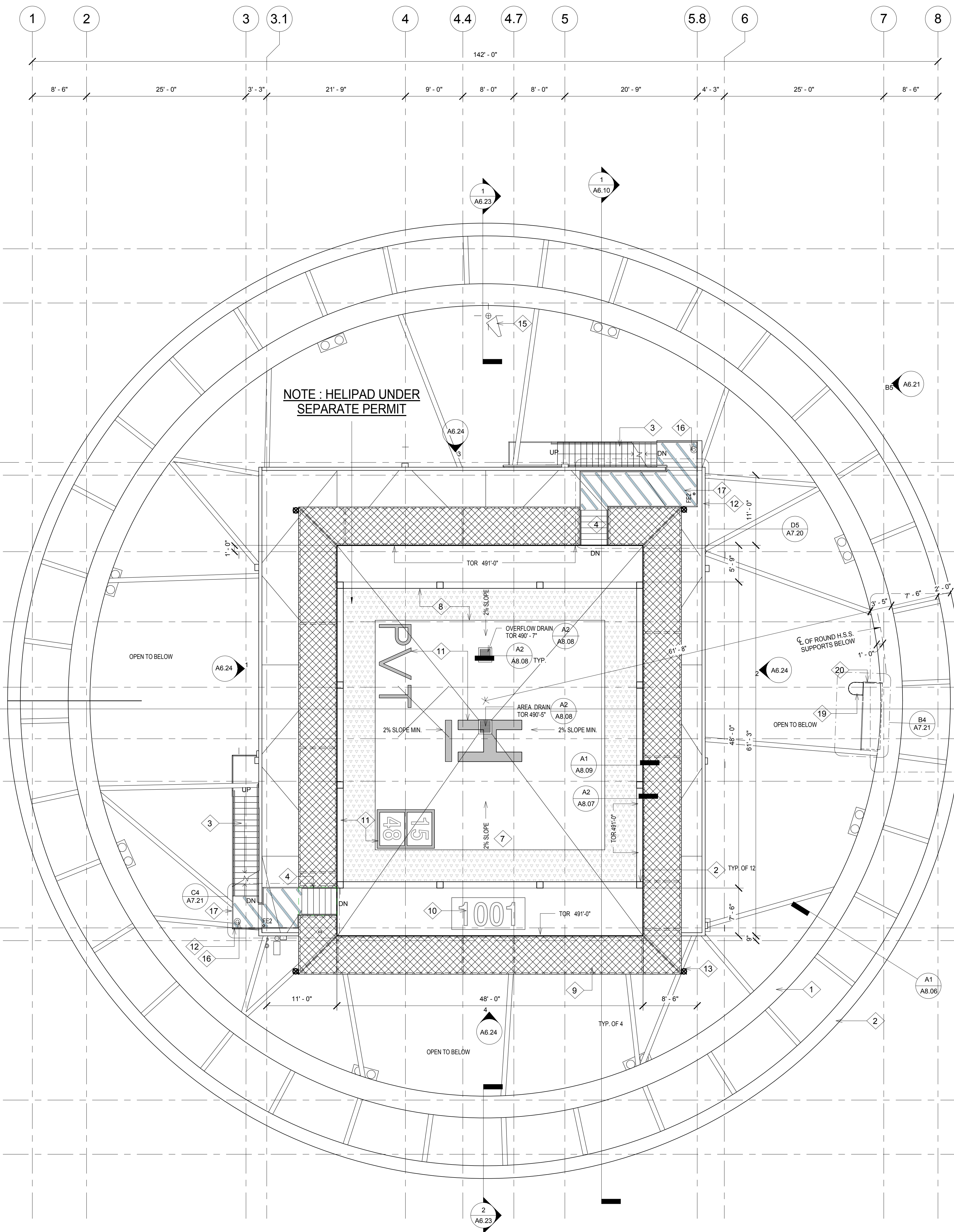


ALL IDEAS, DESIGN ARRANGEMENTS AND PLANS INDICATED OR REPRESENTED BY THIS DRAWING ARE OWNED BY, AND THE PROPERTY OF, CARRIER JOHNSON AND WERE CREATED, EVOLVED AND DEVELOPED FOR USE ON, AND IN CONNECTION WITH THIS PROJECT. NONE OF SUCH IDEAS, DESIGN ARRANGEMENTS, OR PLANS SHALL BE USED BY, OR DISCLOSED TO ANY PERSON, FIRM, OR CORPORATION FOR ANY PURPOSE WHATSOEVER WITHOUT THE WRITTEN PERMISSION OF CARRIER JOHNSON. FILING THESE DRAWINGS OR SPECIFICATIONS WITH ANY PUBLIC AGENCY IS NOT A PUBLICATION OF SAME. NO COPYING, REPRODUCTION OR USE THEREOF IS PERMISSIBLE WITHOUT THE CONSENT OF CARRIER JOHNSON.

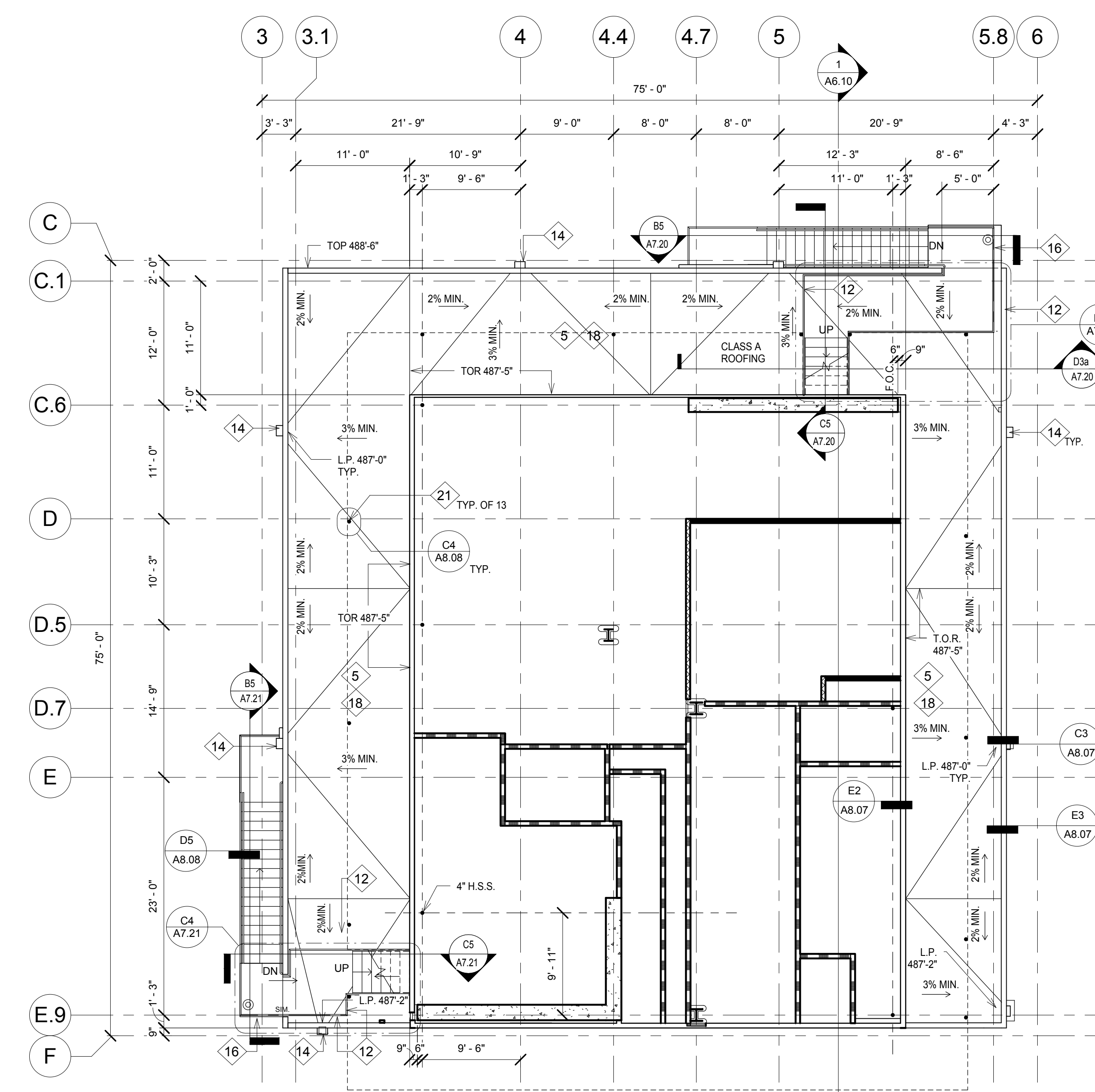


1 HIGH ROOF
1/8" = 1'-0"

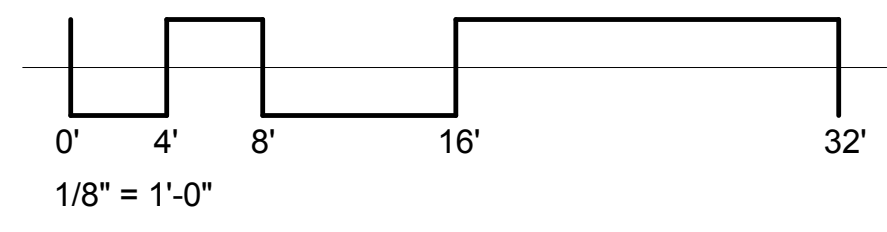
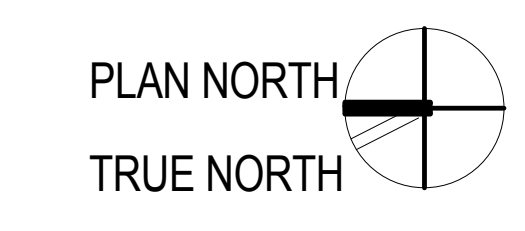
KEY NOTES	
1	PREFINISHED PREFABRICATED ALUMINUM PANEL BEAM COVERS AND COPING
2	FLUSH, EDGE MARKER LIGHT, REFER TO ELECTRICAL
3	CONCRETE FILLED METAL PAN TRENDS AND LANDINGS
4	GALVANIZED METAL GRATE STAIRS
5	PVC ROOFING OVER TAPERED RIGID INSULATION
6	ROOF DRAIN AND OVERFLOW
7	DOUBLE CONCRETE SLAB WITH PVC WATER PROOFING SYSTEM BETWEEN SLABS PROVIDE 1-HOUR FIRE PROOFING ON BOTTOM OF STEEL DECK
8	5' WIDE TRUNCATED DOMES (YELLOW)
9	GALVANIZED WIRE MESH NET IN GALVANIZED PIPE FRAME AND SUPPORTS, 6' WIDE
10	3'-4" HIGH WHITE LUMINOUS PAINTED NUMBERS ON BLACK BACKGROUND
11	PAINTED HELIPAD MARKINGS PER FAA ADVISORY CIRCULAR NO. 150/530-2B, FIGURES 2-19 THROUGH 2-22
12	3'-6" HIGH GALV. PIPE GUARDRAIL
13	OBSTRUCTION LIGHTING PER FAA ADVISORY CIRCULAR NO. 707460-1G
14	SCUPPER AND DOWNSPOUT WITH OVERFLOW
15	INTERNALLY LIT WIND CONE
16	COMBINED FIRE RISER STAND PIPE
17	WHITE 4" WIDE PAINTED STRIPES @ 24" O.C.
18	PROVIDE 1-HOUR FIRE PROOFING ON BOTTOM OF STEEL DECK
19	GALVANIZED STEEL LADDER AND SAFETY GATE
20	GALVANIZED STEEL GRATE PLATFORM AND PIPE GUARDRAIL
21	SAFETY NET SUPPORT POSTS.

WALL LEGEND	
	1-HOUR FIRE-RESISTIVE PARTITION
	2-HOUR FIRE-RESISTIVE PARTITION

ABBREVIATIONS:
 L.P. LOW POINT
 H.P. HIGH POINT
 T.O.C. TOP OF CURB
 T.O.S. TOP OF SLAB
 T.O.R. TOP OF ROOFING SYSTEM
 T.O.CONC. TOP OF CONCRETE



2 MECH LOW ROOF
1/8" = 1'-0"



ONE BROADWAY PLAZA
 1001 NORTH BROADWAY PLAZA, SANTA ANA, CALIFORNIA
 Caribou Industries
 OWNER / DEVELOPER

PERMIT SET 08/19/11
 CITY SUBMITTAL 12/23/10
 PROJECT STATUS
 ISSUES:



PROJECT NO: 4788.00
 SCALE: AS NOTED
 DRAWN BY: CHECKED BY:
 PLOT DATE: 12-22-10
 TITLE:

MECHANICAL
 PENTHOUSE / ROOF
 PLAN

DRAWING NO: