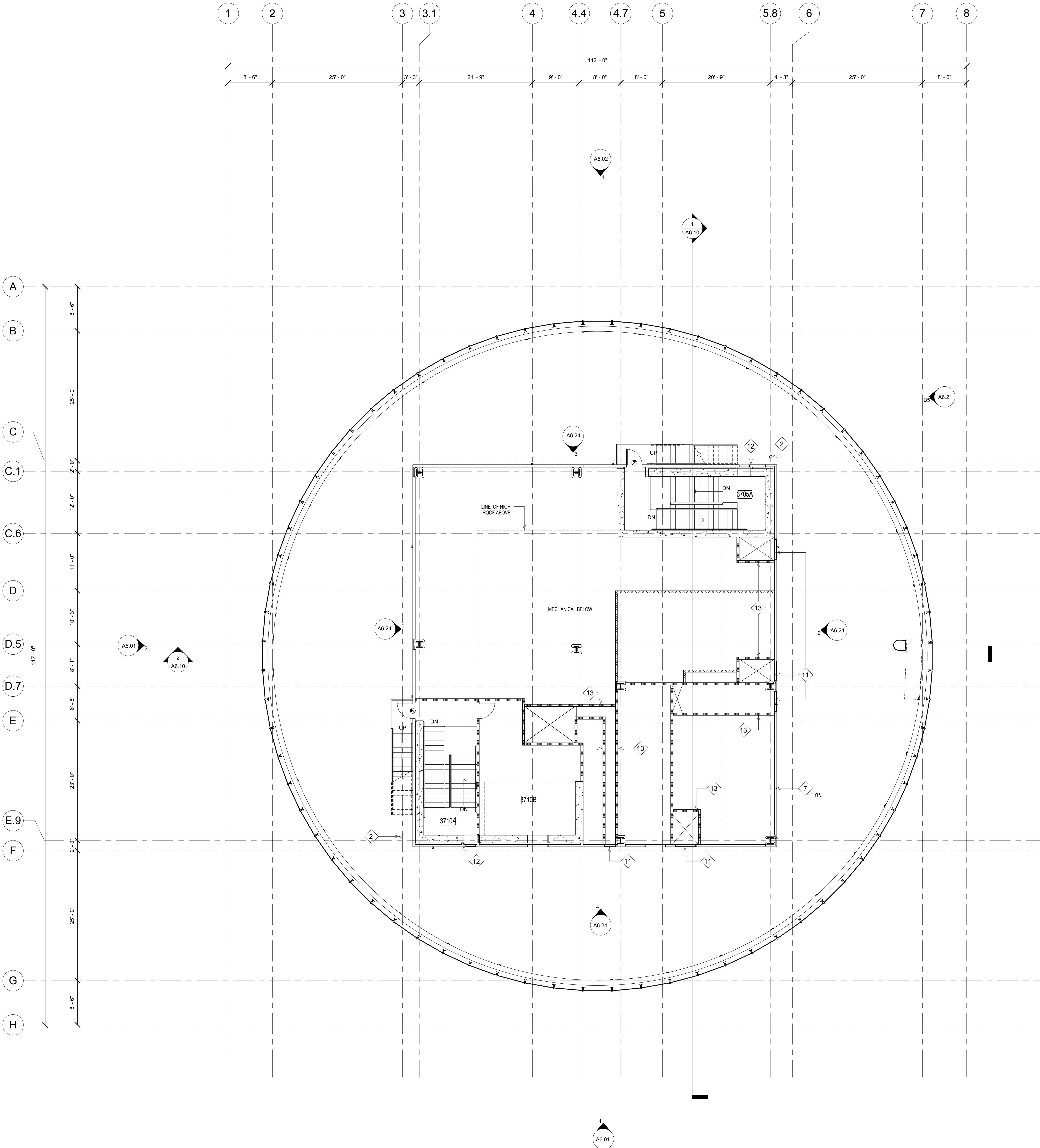


ALL IDEAS, DESIGN ARRANGEMENTS AND PLANS INDICATED OR REPRESENTED BY THIS DRAWING ARE OWNED BY, AND THE PROPERTY OF, CARRIER JOHNSON AND WERE CREATED, EVOLVED AND DEVELOPED FOR USE ON, AND IN CONNECTION WITH THIS PROJECT. NONE OF SUCH IDEAS, DESIGN ARRANGEMENTS, OR PLANS SHALL BE USED BY, OR DISCLOSED TO ANY PERSON, FIRM, OR CORPORATION FOR ANY PURPOSE WHATSOEVER WITHOUT THE WRITTEN PERMISSION OF CARRIER JOHNSON. FILING THESE DRAWINGS OR SPECIFICATIONS WITH ANY PUBLIC AGENCY IS NOT A PUBLICATION OF SAME. NO COPYING, REPRODUCTION OR USE THEREOF IS PERMISSIBLE WITHOUT THE CONSENT OF CARRIER JOHNSON.



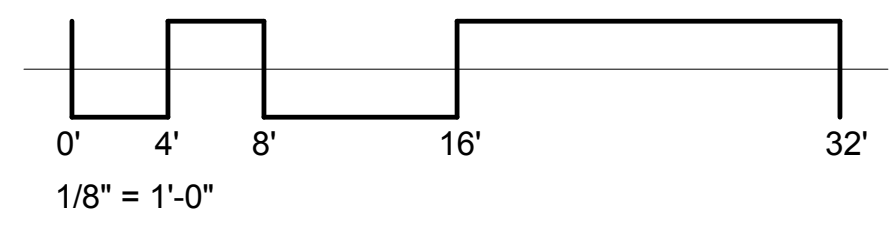
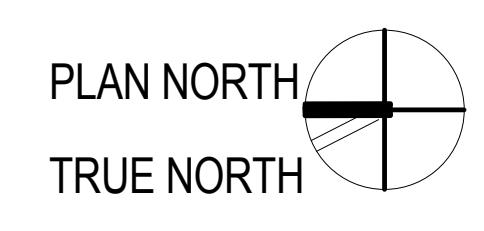
- KEY NOTES**
- 1 FULL HEIGHT WIRE MESH AND BEAM DIVIDER
 - 2 COMBINED FIRE RISER STANDPIPE CLASS I
 - 3 PREFINISHED PREFABRICATED ALUMINUM PANEL BEAM COVERS
 - 4 PREFINISHED PREFABRICATED ALUMINUM PANEL CANOPY
 - 5 INTERNALLY LIT WIND CONE
 - 6 ELEVATOR VENT SHAFT
 - 7 PREFORMED METAL SIDING OVER GIRTS AND STEEL STUDS
 - 8 DOWNSPOUT AND SPLASH BLOCK
 - 9 PVC CLASS A ROOFING OVER RIGID INSULATION
 - 10 ROOF DRAIN AND OVERFLOW
 - 11 ELEVATOR RELIEF VENT LOUVER, REFER TO MECHANICAL DRAWINGS
 - 12 STAR RELIEF VENT LOUVER, REFER TO MECHANICAL DRAWINGS
 - 13 2-HOUR HORIZONTAL SHAFT
 - 14 HORIZONTAL SHAFT TRANSITION OVERHEAD
 - 15 EQUIPMENT REPLACEMENT PATH
 - 16 GALVANIZED STEEL LADDER AND SAFETY CAGE
 - 17 PVC WALK PADS

- WALL LEGEND**
- 1 HOUR FIRE-RESISTIVE PARTITION
 - 2 HOUR FIRE-RESISTIVE PARTITION

- LEGEND**
- EXIT SIGN

ELEVATOR MACHINE ROOM ROOM SCHEDULE

Number	Name
3705A	STAIR 1
3710A	STAIR 2
3710B	ELEV. MACH. RM.



ONE BROADWAY PLAZA
 1001 NORTH BROADWAY PLAZA, SANTA ANA, CALIFORNIA
 Caribou Industries
 OWNER / DEVELOPER

carrierjohnson
 architecture for urban environments
 275b mcomnick ave. costa mesa ca 92626
 phone 714.432.8756 | fax 714.432.8956

PERMIT SET 08/19/11
 CITY SUBMITTAL 12/23/10
 PROJECT STATUS
 ISSUES:



PROJECT NO: 4788.00
 SCALE: AS NOTED
 DRAWN BY: CHECKED BY:

PLOT DATE: 12-22-10
 TITLE: ELEVATOR MACHINE ROOM

DRAWING NO:

A2.16