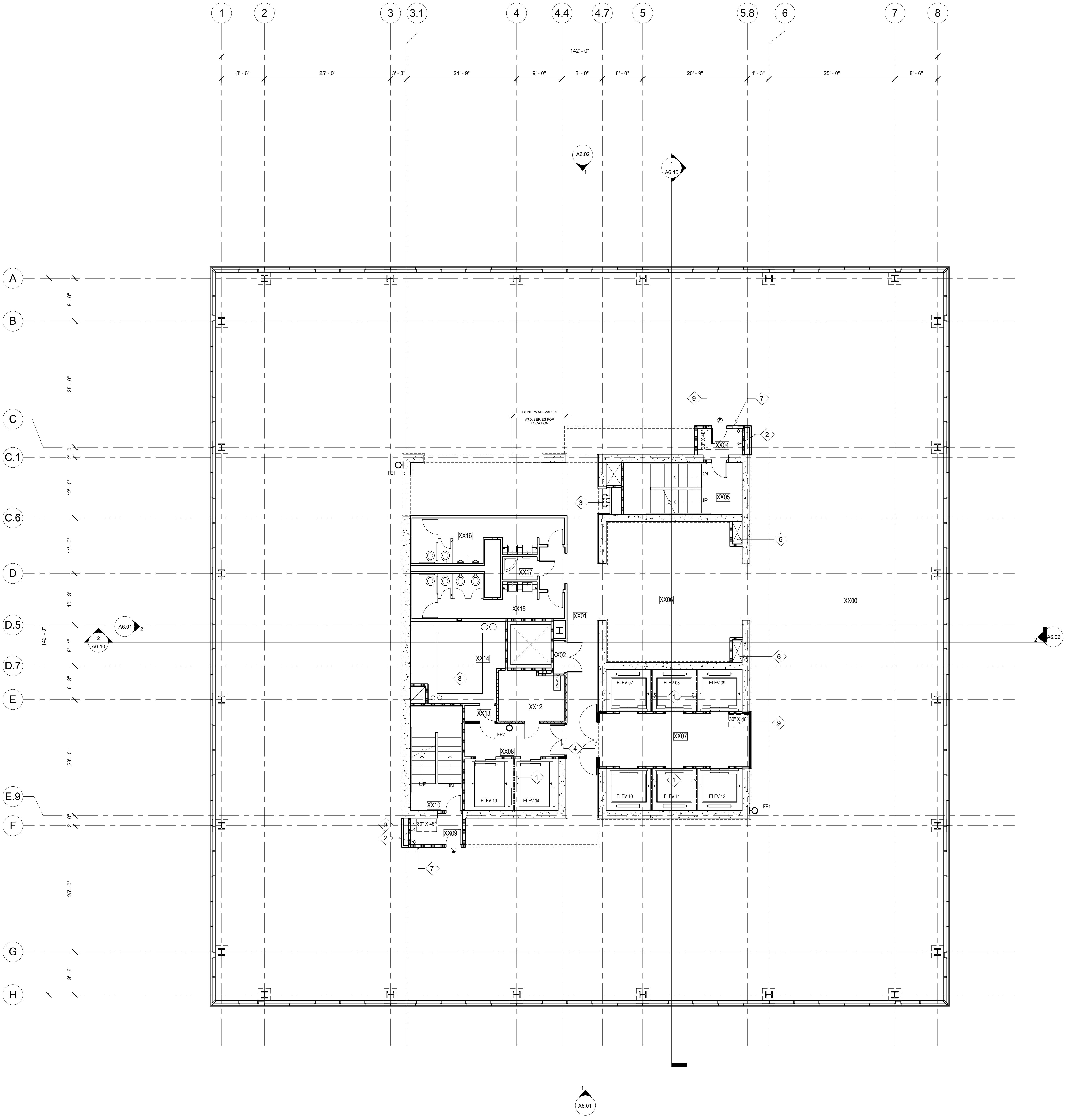


ALL IDEAS, DESIGN ARRANGEMENTS AND PLANS INDICATED OR REPRESENTED BY THIS DRAWING ARE OWNED BY, AND THE PROPERTY OF, CARRIER JOHNSON AND WERE CREATED, EVOLVED AND DEVELOPED FOR USE ON, AND IN CONNECTION WITH THIS PROJECT. NONE OF SUCH IDEAS, DESIGN ARRANGEMENTS, OR PLANS SHALL BE USED BY, OR DISCLOSED TO ANY PERSON, FIRM, OR CORPORATION FOR ANY PURPOSE WHATSOEVER WITHOUT THE WRITTEN PERMISSION OF CARRIER JOHNSON. FILING THESE DRAWINGS OR SPECIFICATIONS WITH ANY PUBLIC AGENCY IS NOT A PUBLICATION OF SAME. NO COPYING, REPRODUCTION OR USE THEREOF IS PERMISSIBLE WITHOUT THE CONSENT OF CARRIER JOHNSON.



KEY NOTES

- 1 BEAM DIVIDER
- 2 COMBINED FIRE RISER STANDPIPE CLASS I AND 4" DRAIN PIPE
- 3 DUAL HEIGHT DRINKING FOUNTAIN
- 4 POCKET DOORS WITH MAGNETIC HOLD-OPEN
- 5 2" WIDE CONTRASTING STRIPE AT TOP AND BOTTOM NOSING
- 6 ELEVATOR VENT SHAFT
- 7 FIRE EXTINGUISHER CABINET (FEC)
- 8 4" CONCRETE MECHANICAL PAD. REFER TO MECHANICAL
- 9 AREA OF REFUGE

WALL LEGEND

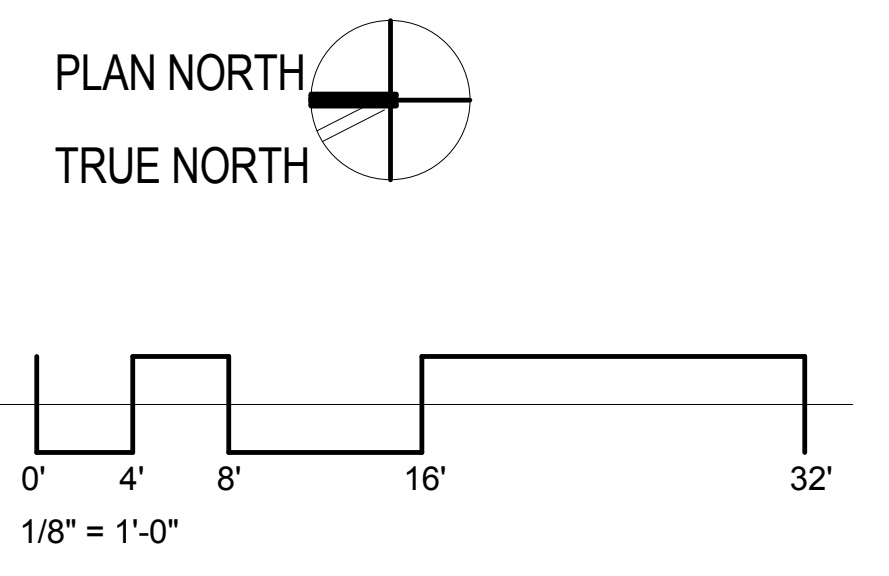
- 1-HOUR FIRE-RESISTIVE FIRE PARTITION
- 1-HOUR FIRE-RESISTIVE FIRE BARRIER
- 2-HOUR FIRE-RESISTIVE FIRE BARRIER

LEGEND

- EXIT SIGN

23RD FLOOR ROOM SCHEDULE

Number	Name
XX00	UNOCCUPIED TENANT
XX01	HALLWAY
XX02	TELECOM
XX04	VEST.
XX05	STAIR 1
XX06	UNOCCUPIED TENANT
XX07	ELEV. LOBBY
XX08	ELEV. LOBBY
XX09	VEST.
XX10	STAIR 2
XX12	ELECTRICAL RM.
XX13	VEST.
XX14	MECHANICAL
XX15	WOMEN
XX16	MEN
XX17	JAN.



ONE BROADWAY PLAZA
 1001 NORTH BROADWAY PLAZA, SANTA ANA, CALIFORNIA

Caribou Industries
 OWNER / DEVELOPER

carrierjohnson
 architecture for urban environments

275b mccormick ave. costa mesa ca 92626
 phone 714.432.8756 | fax 714.432.8956

PERMIT SET 08/19/11
 CITY SUBMITTAL 12/23/10
 PROJECT STATUS
 ISSUES:

PROJECT NO.: 4788.00
 SCALE: AS NOTED
 DRAWN BY: CHECKED BY:

PLOT DATE: 12-22-10
 TITLE: TYPICAL FLOOR PLAN (23RD-26TH)

DRAWING NO.: **A2.9**

