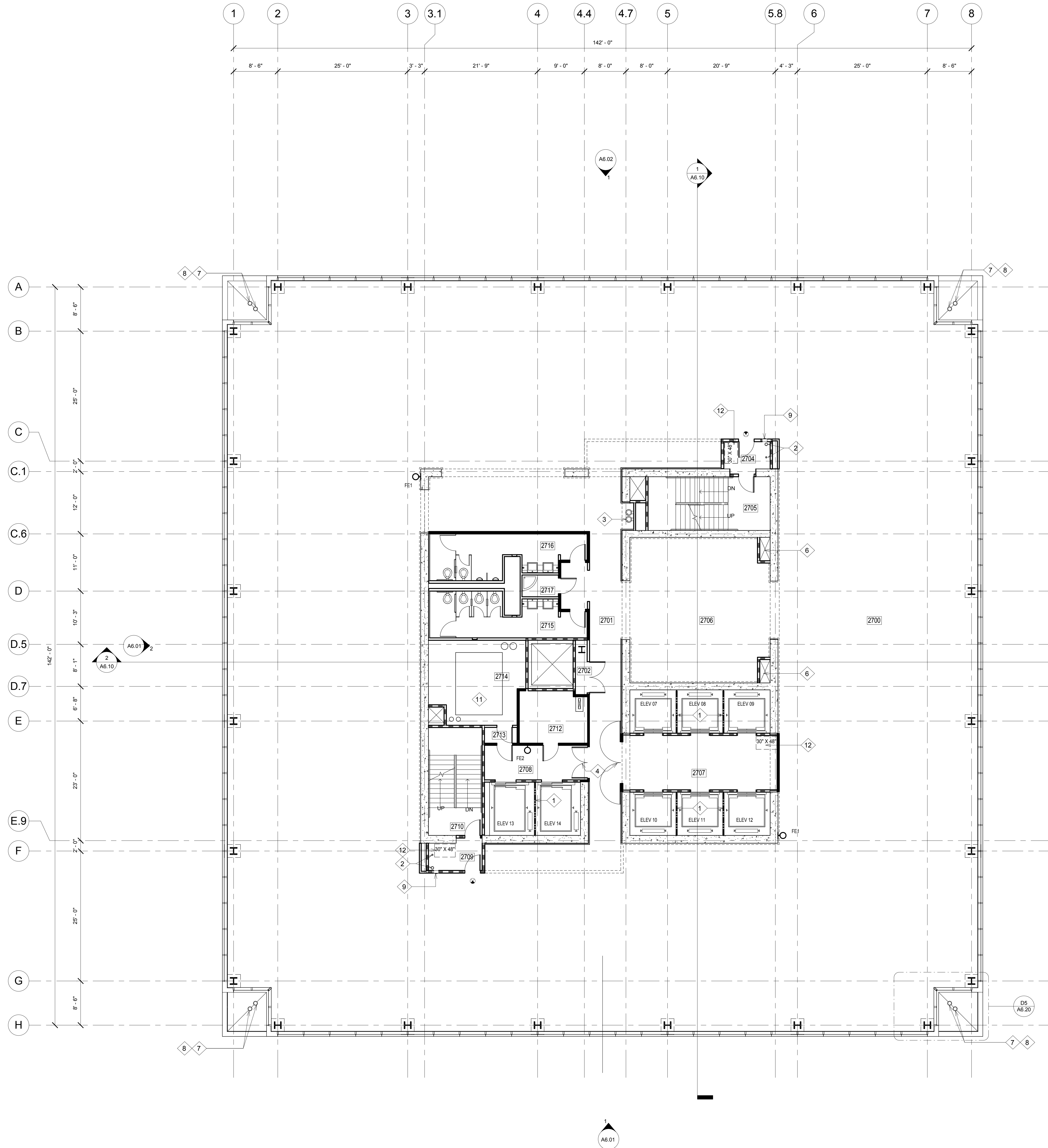


ALL IDEAS, DESIGN ARRANGEMENTS AND PLANS INDICATED OR REPRESENTED BY THIS DRAWING ARE OWNED BY, AND THE PROPERTY OF, CARRIER JOHNSON AND WERE CREATED, EVOLVED AND DEVELOPED FOR USE ON, AND IN CONNECTION WITH THIS PROJECT. NONE OF SUCH IDEAS, DESIGN ARRANGEMENTS, OR PLANS SHALL BE USED BY, OR DISCLOSED TO ANY PERSON, FIRM, OR CORPORATION FOR ANY PURPOSE WHATSOEVER WITHOUT THE WRITTEN PERMISSION OF CARRIER JOHNSON. FILING THESE DRAWINGS OR SPECIFICATIONS WITH ANY PUBLIC AGENCY IS NOT A PUBLICATION OF SAME. NO COPYING, REPRODUCTION OR USE THEREOF IS PERMISSIBLE WITHOUT THE CONSENT OF CARRIER JOHNSON.



KEY NOTES

- 1 BEAM DIVIDER
- 2 COMBINED FIRE RISER STANDPIPE CLASS 1 AND 4" DRAIN PIPE
- 3 DUAL HEIGHT DRINKING FOUNTAIN
- 4 POCKET DOORS WITH MAGNETIC HOLD-OPEN
- 5 NOT USED
- 6 ELEVATOR VENT SHAFT
- 7 PREFINISHED PREFABRICATED ALUMINUM COPING
- 8 BUILDING UPLIGHT
- 9 FIRE EXTINGUISHER CABINET (FEC)
- 10 2 HOUR HORIZONTAL SHAFT TRANSITION OVERHEAD
- 11 4" CONCRETE MECHANICAL PAD. REFER TO MECHANICAL
- 12 AREA OF REFUGE

WALL LEGEND

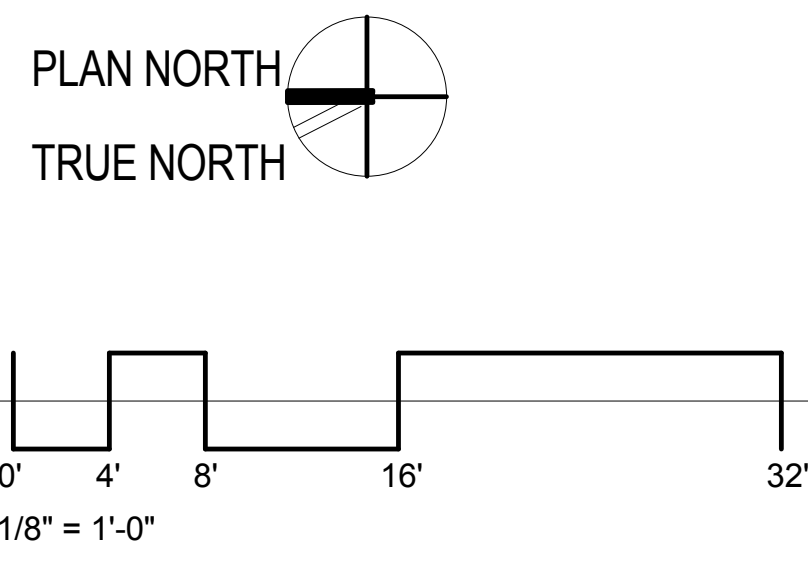
- 1-HOUR FIRE-RESISTIVE FIRE PARTITION
- 1-HOUR FIRE-RESISTIVE FIRE BARRIER
- 2-HOUR FIRE-RESISTIVE FIRE BARRIER

LEGEND

- EXIT SIGN

27TH FLOOR ROOM SCHEDULE

Number	Name
2700	UNOCCUPIED TENANT
2701	HALLWAY
2702	TELECOM
2704	VESTIBULE
2705	STAIR 1
2706	UNOCCUPIED TENANT
2707	ELEV. LOBBY
2708	ELEV. LOBBY
2709	VEST.
2710	STAIR 2
2712	ELECTRICAL RM.
2713	VEST.
2714	MECHANICAL
2715	WOMEN
2716	MEN
2717	JAN.



carrierjohnson
 architecture for urban environments
 275b mocomick ave. costa mesa ca 92626
 phone 714.432.8756 | fax 714.432.8956

ONE BROADWAY PLAZA
 1001 NORTH BROADWAY PLAZA, SANTA ANA, CALIFORNIA
 Caribou Industries
 OWNER / DEVELOPER

PERMIT SET 08/19/11
 CITY SUBMITTAL 12/23/10
 PROJECT STATUS
 ISSUES:

PROJECT NO: 4788.00
 SCALE: AS NOTED
 DRAWN BY: CHECKED BY:

PLOT DATE: 12-22-10
 TITLE: TYPICAL FLOOR PLAN (27TH-32ND)

DRAWING NO: A2.10

A2.10