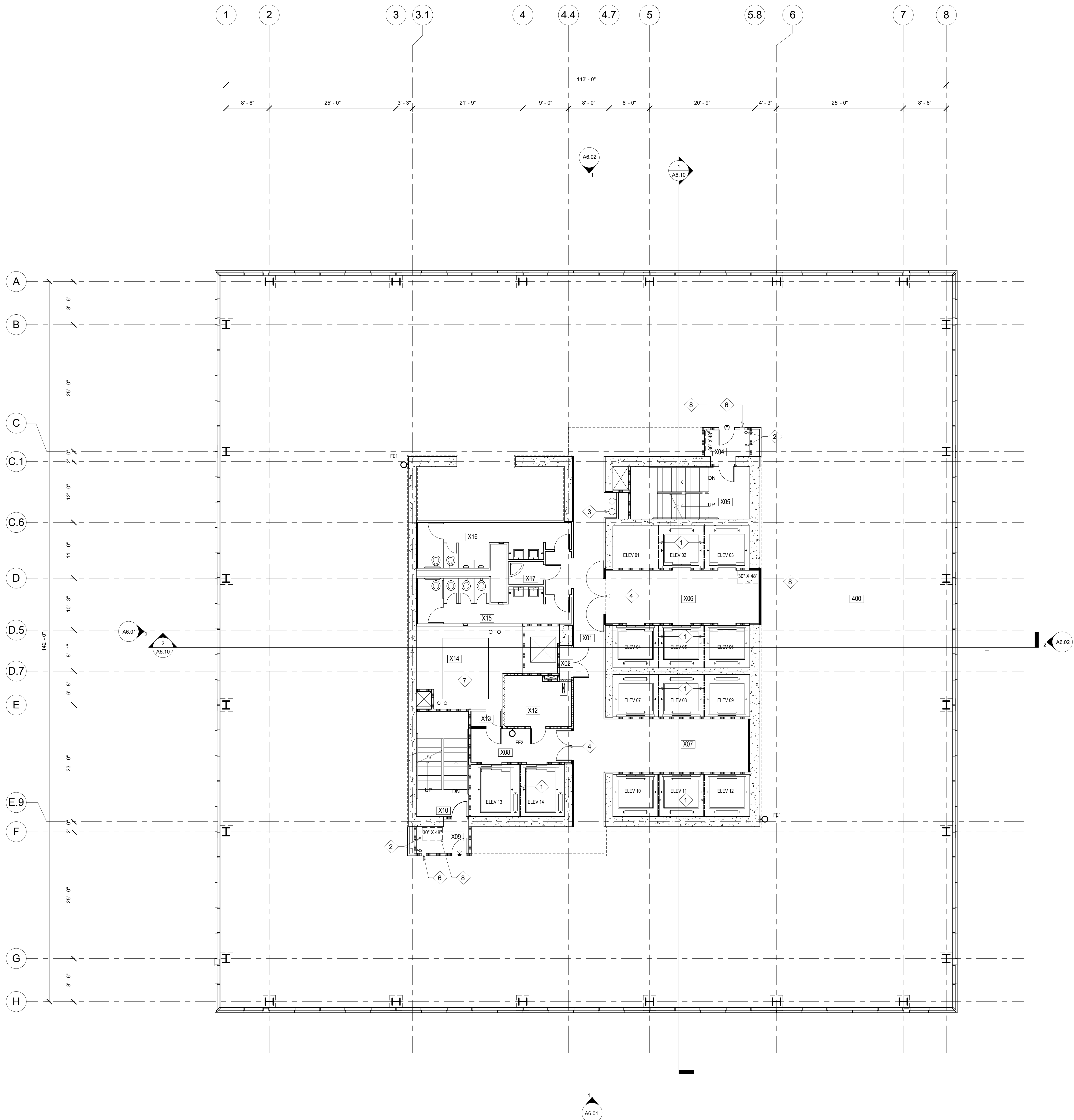


ALL IDEAS, DESIGN ARRANGEMENTS AND PLANS INDICATED OR REPRESENTED BY THIS DRAWING ARE OWNED BY, AND THE PROPERTY OF, CARRIER JOHNSON AND WERE CREATED, EVOLVED AND DEVELOPED FOR USE ON, AND IN CONNECTION WITH THIS PROJECT. NONE OF SUCH IDEAS, DESIGN, ARRANGEMENTS, OR PLANS SHALL BE USED BY, OR DISCLOSED TO ANY PERSON, FIRM, OR CORPORATION FOR ANY PURPOSE WHATSOEVER WITHOUT THE WRITTEN PERMISSION OF CARRIER JOHNSON. FILING THESE DRAWINGS OR SPECIFICATIONS WITH ANY PUBLIC AGENCY IS NOT A PUBLICATION OF SAME. NO COPYING, REPRODUCTION OR USE THEREOF IS PERMISSIBLE WITHOUT THE CONSENT OF CARRIER JOHNSON.



KEY NOTES

- 1 BEAM DIVIDER
- 2 COMBINED FIRE RISER STANDPIPE CLASS I AND 4" DRAIN PIPE
- 3 DUAL HEIGHT DRINKING FOUNTAIN
- 4 POCKET DOORS WITH MAGNETIC HOLD-OPEN
- 5 NOT USED
- 6 FIRE EXTINGUISHER CABINET (FEC)
- 7 4" CONCRETE MECHANICAL PAD. REFER TO MECHANICAL
- 8 AREA OF REFUGE

WALL LEGEND

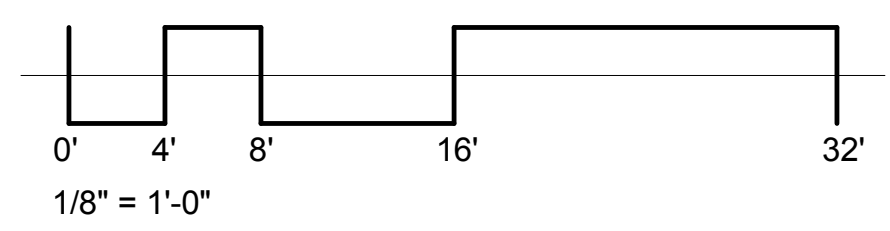
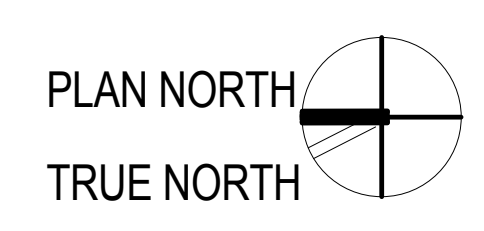
- 1-HOUR FIRE-RESISTIVE FIRE PARTITION
- 1-HOUR FIRE-RESISTIVE FIRE BARRIER
- 2-HOUR FIRE-RESISTIVE FIRE BARRIER

LEGEND

- EXT SIGN

4TH -18TH FLOOR ROOM SCHEDULE

Number	Name
400	UNOCCUPIED TENANT
X01	HALLWAY
X02	TELECOM
X04	VEST
X05	STAIR 1
X06	ELEV. LOBBY
X07	UNOCCUPIED TENANT
X08	ELEV. LOBBY
X09	VEST
X10	STAIR 2
X12	ELEC. RM.
X13	VEST
X14	MECHANICAL
X15	WOMEN
X16	MEN
X17	JAN.



ONE BROADWAY PLAZA
 1001 NORTH BROADWAY PLAZA, SANTA ANA, CALIFORNIA

Caribou Industries
 OWNER / DEVELOPER

carrierjohnson
 architecture for urban environments

275b mccormick ave. costa mesa ca 92626
 phone 714.432.8756 | fax 714.432.8956

PERMIT SET 08/19/11
 CITY SUBMITTAL 12/23/10
 PROJECT STATUS
 ISSUES:



PROJECT NO: 4788.00
 SCALE: AS NOTED
 DRAWN BY: CHECKED BY:

PLOT DATE: 12-22-10
 TITLE:

TYPICAL FLOOR PLAN (4TH-18TH)

DRAWING NO:

A2.4